



Price
£475,000

Freehold

3x  1x  2x 

**Brian Road, Chadwell
Heath, Essex, RM6**

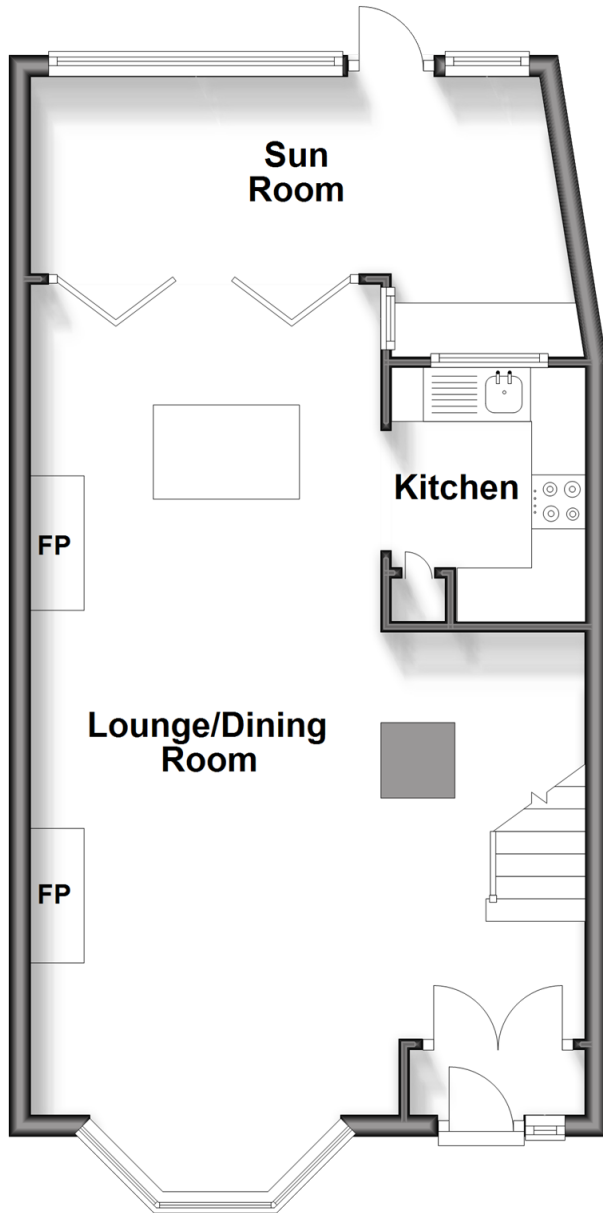
OVER 60?

Secure this property
for up to **59% less!**

 **DOUGLAS
ALLEN**
Helping you move forwards

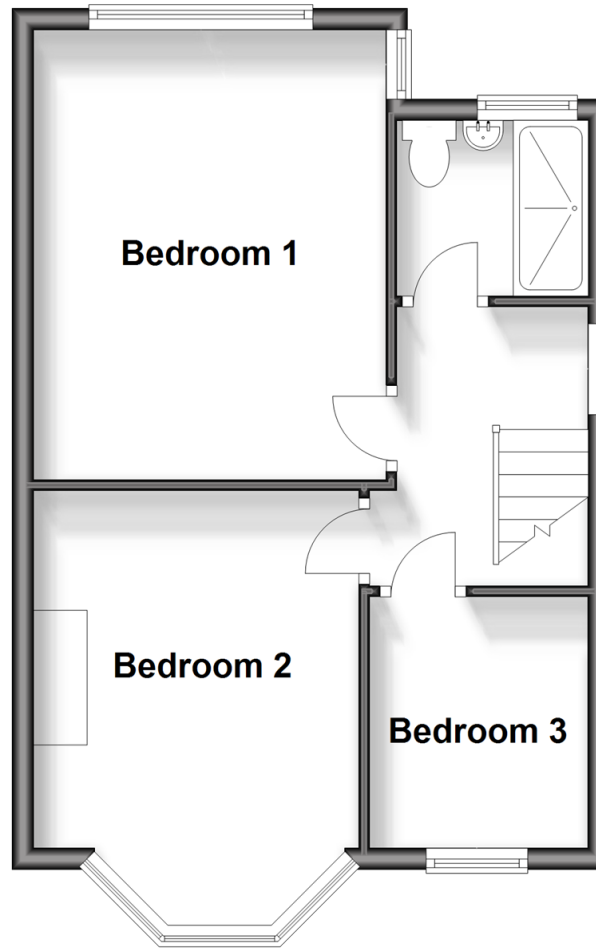
Ground Floor

Approx. 49.8 sq. metres (535.6 sq. feet)



First Floor

Approx. 38.1 sq. metres (410.5 sq. feet)



Accommodation

GROUND FLOOR

Entrance Porch

Entrance Hall

Lounge/Dining Room: 13'9 x 10'11 (4.19m x 3.33m) plus 10'4 x 13'6 (3.15m x 4.12m)

Kitchen: 7'9 x 5'11 (2.36m x 1.80m)

Sun Room

FIRST FLOOR

Landing

Bedroom 1: 14'1 x 10'7 (4.30m x 3.23m)

Bedroom 2: 13'8 x 11'0 (4.17m x 3.36m)

Bedroom 3: 7'11 x 6'3 (2.41m x 1.91m)

Shower Room

OUTSIDE

Rear Garden

Off Street Parking



Main features

- Spacious end of terrace house with off street parking
- Situated in a sought after area of Redbridge
- Outbuilding currently used as a bar/diner, ideal for socialising
- Walking distance to shops, schools and places of worship
- Close to Chadwell Heath station/Elizabeth Line



Nearest Schools

Primary Schools: St Bede's Catholic Primary 0.1 miles, Grove Primary 0.2 miles, Marks Gate Junior School 0.6 miles

Secondary Schools: Little Heath School 0.3 miles,



Transport Information

Train Stations: Chadwell Heath 1.1 miles, Goodmayes 1.7 miles, Seven Kings 2.3 miles

Underground Newbury Park 1.9 miles, Becontree 2.7 miles, Grange Hill 2.7 miles



Address

Brian Road, Chadwell Heath, Essex, RM6



Directions

For directions to this property please contact us.



Call Chadwell Heath Branch 020 8597 0043 ■ douglasallen.co.uk



- A private rental licensing scheme applies to some properties in this area, please contact us before proceeding
- Appliances & services are untested, dimensions are approximate and floor plans are not to scale

- Legal advice should be taken to verify fixtures/fittings, planning, alterations and/or lease details
- Through a Homewise Home For Life Plan people aged 60+ can secure this property for up to 59% less, by purchasing a Lifetime Lease.



50703514/20250308/CN/MH