



Price

£260,000

Leasehold

2x  1x  1x 

Overton Drive, Romford,  
Essex, RM6

**OVER 60?**

Secure this property  
for up to **59% less!**

 **DOUGLAS  
ALLEN**  
Helping you move forwards



## Main features

- Attractive ground floor purpose built flat
- Communal garden
- Modern kitchen and bathroom
- Ideal purchase for first time buyers or buy-to-let investors
- Close to Chadwell Heath station/Elizabeth Line

## Accommodation

### GROUND FLOOR

Entrance Hall

Lounge/Kitchen/Dining Room: 13'5 x 11'2 (4.09m x 3.41m)

Kitchen: 10'2 x 7'5 (3.10m x 2.26m)

Bedroom 1: 10'10 x 8'8 (3.30m x 2.64m)

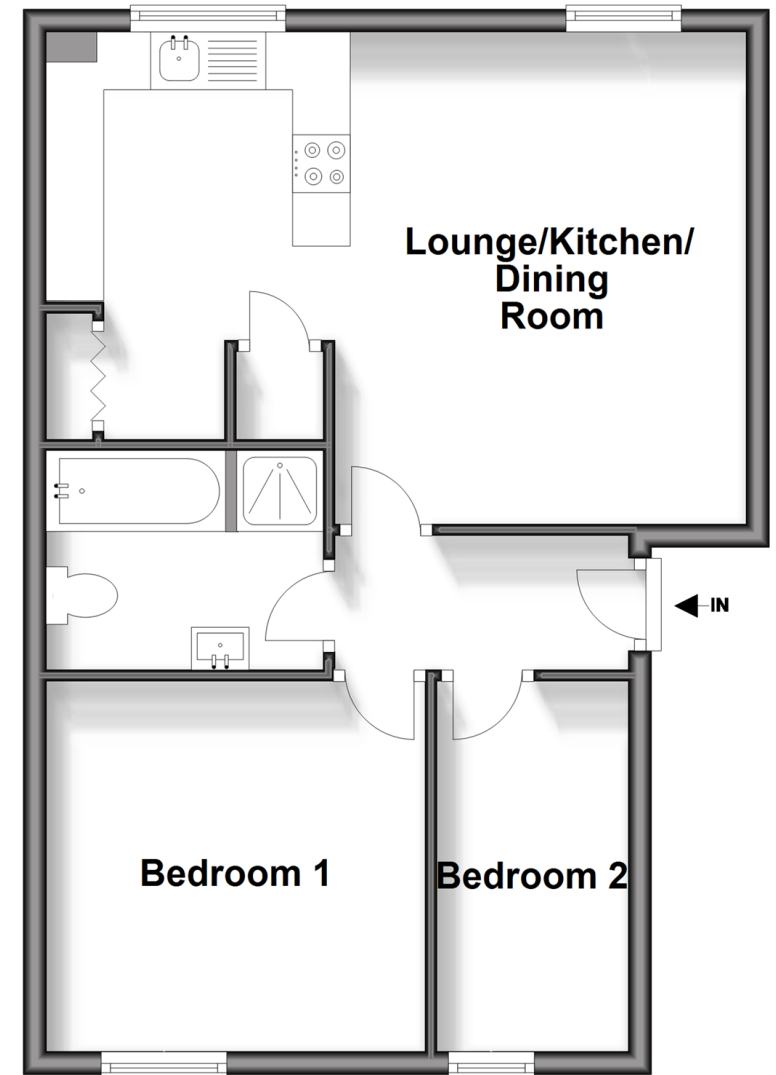
Bedroom 2: 10'4 x 5'2 (3.15m x 1.58m)

### OUTSIDE

Communal Garden

## Ground Floor

Approx. 48.9 sq. metres (526.7 sq. feet)



Call Chadwell Heath - 020 8597 0043 ■ [douglasallen.co.uk](http://douglasallen.co.uk)

- A private rental licensing scheme applies to some properties in this area, please contact us before proceeding
- Legal advice should be taken to verify fixtures/fittings, planning, alterations and/or lease details
- Appliances & services are untested, dimensions are approximate and floor plans are not to scale
- Through a Homewise Home For Life Plan people aged 60+ can secure this property for up to 59% less, by purchasing a Lifetime Lease.



50712951/20241109/CN/\*\*\*\*