



**Modern
Auction**

**£325,000
Freehold**

2x  1x  1x 

**Armstrong Close,
Dagenham, Essex, RM8**

 **DOUGLAS
ALLEN**
Helping you move forwards



Main features

- Terraced house situated in the popular Redbridge Borough
- Walking distance to Chadwell Heath station
- For sale by Modern Auction T&Cs apply
- Subject to an undisclosed Reserve Price
- Buyers fees apply

Accommodation

GROUND FLOOR

Lounge Area: 15'10 x 11'7 (4.83m x 3.53m)

Kitchen/Diner: 11'7 x 7'11 (3.53m x 2.41m)

FIRST FLOOR

Landing

Bedroom 1: 11'7 x 11'3 (3.53m x 3.43m)

Bedroom 2: 11'7 x 7'10 (3.53m x 2.39m)

Bathroom

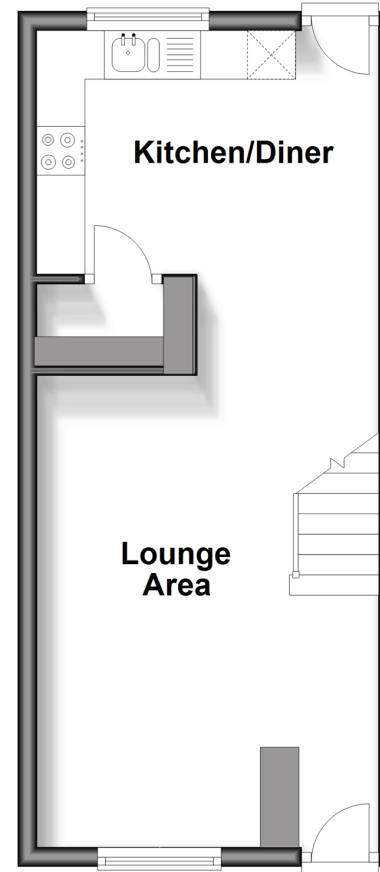
OUTSIDE

Rear Garden

Allocated Parking

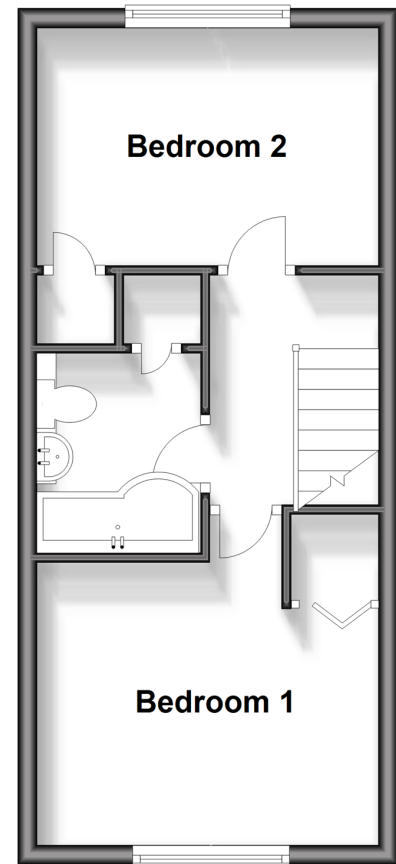
Ground Floor

Approx. 29.8 sq. metres (321.0 sq. feet)



First Floor

Approx. 29.7 sq. metres (319.5 sq. feet)



Call Chadwell Heath - 020 8597 0043 ■ douglasallen.co.uk

- A private rental licensing scheme applies to some properties in this area, please contact us before proceeding
- Legal advice should be taken to verify fixtures/fittings, planning, alterations and/or lease details
- Appliances & services are untested, dimensions are approximate and floor plans are not to scale



50713637/20241116/CN/MH