



Price
£450,000

Freehold

3x  2x  1x 

**Albany Road, Romford,
Essex, RM6**

 **DOUGLAS
ALLEN**
Helping you move forwards



Main features

- Well maintained semi-detached house with entrance porch
- Situated in the Barking & Dagenham Borough
- Walking distance to Chadwell Heath station
- Conservatory & Outbuilding
- Close to good Primary & Secondary schools

Accommodation

GROUND FLOOR

- Entrance Porch
- Entrance Hall
- Lounge: 14'0 x 14'0 (4.27m x 4.27m)
- Kitchen/Dining Room: 17'0 x 12'4 (5.19m x 3.76m)
- Conservatory : 16'3 x 9'5 (4.96m x 2.87m)
- Shower Room

FIRST FLOOR

- Landing
- Bedroom 1: 15'8 x 11'0 (4.78m x 3.36m)
- Bedroom 2: 13'0 x 9'0 (3.97m x 2.75m)
- Bedroom 3: 10'5 x 5'5 (3.18m x 1.65m)
- Bathroom

OUTSIDE

- Front and Rear Garden
- Outbuilding

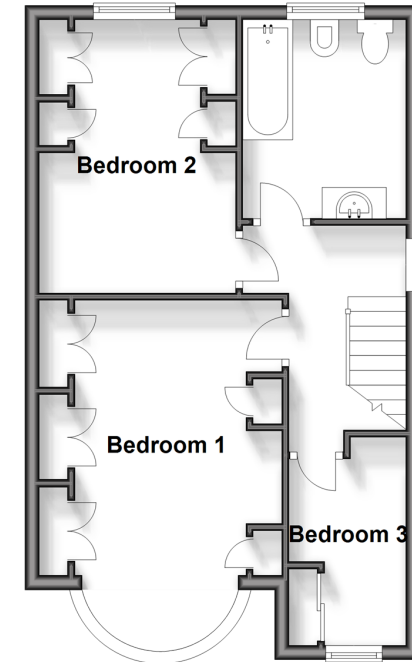
Ground Floor

Approx. 55.5 sq. metres (597.5 sq. feet)



First Floor

Approx. 42.2 sq. metres (454.5 sq. feet)



Call Chadwell Heath - 020 8597 0043 ■ douglasallen.co.uk

- A private rental licensing scheme applies to some properties in this area, please contact us before proceeding
- Legal advice should be taken to verify fixtures/fittings, planning, alterations and/or lease details
- Appliances & services are untested, dimensions are approximate and floor plans are not to scale



50713807/20240907/CN/AV