



Price

£160,000

Leasehold

1x  1x  1x 

**Crucible Close,
Romford, Essex, RM6**

OVER 60?

Secure this property
for up to **59% less!**

 **DOUGLAS
ALLEN**
Helping you move forwards



Main features

- Ground floor purpose built flat with communal garden area
- Allocated parking
- Open plan living area
- Bus links to Goodmayes station
- Ideal purchase for any first time buyers or buy-to-let investors

Accommodation

GROUND FLOOR

Entrance Hall

Lounge/Kitchen/Dining Room: 15'7 x 13'0 (4.75m x 3.97m)

Bedroom : 10'8 x 9'0 (3.25m x 2.75m)

Bathroom

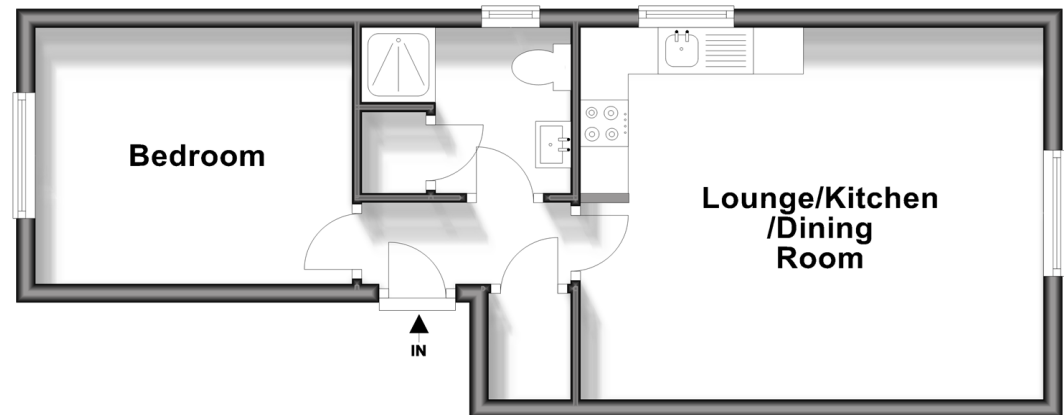
OUTSIDE

Allocated Parking

Communal Garden

Ground Floor

Approx. 36.4 sq. metres (391.3 sq. feet)



Call Chadwell Heath - 020 8597 0043 ■ douglasallen.co.uk

- A private rental licensing scheme applies to some properties in this area, please contact us before proceeding
- Appliances & services are untested, dimensions are approximate and floor plans are not to scale

- Legal advice should be taken to verify fixtures/fittings, planning, alterations and/or lease details
- Through a Homewise Home For Life Plan people aged 60+ can secure this property for up to 59% less, by purchasing a Lifetime Lease.