



Price
£600,000

Freehold

4x  2x  3x 

**Langham Drive,
Chadwell Heath, Essex,
RM6**

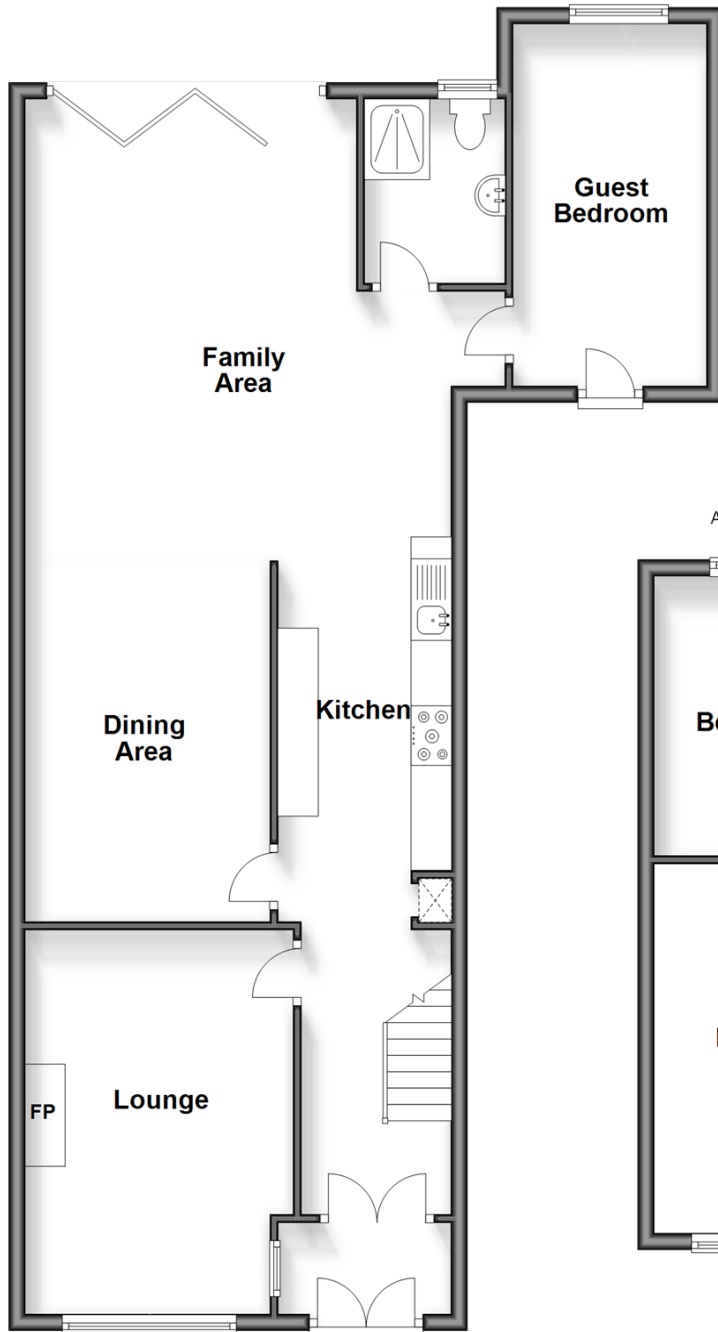
OVER 60?

Secure this property
for up to **59% less!**

 **DOUGLAS
ALLEN**
Helping you move forwards

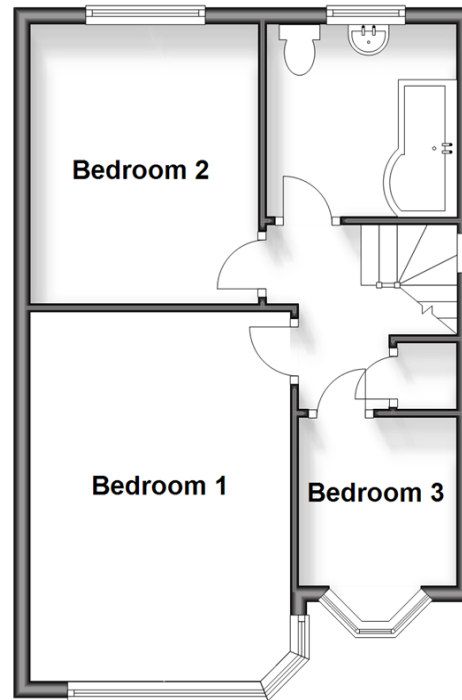
Ground Floor

Approx. 91.6 sq. metres (986.0 sq. feet)



First Floor

Approx. 39.9 sq. metres (429.6 sq. feet)



Accommodation

GROUND FLOOR

Entrance Porch

Entrance Hall

Lounge: 15'2 x 10'7 (4.63m x 3.23m)

Dining Area: 11'9 x 9'8 (3.58m x 2.95m)

Kitchen: 13'5 x 6'5 (4.09m x 1.96m)

Family Area: 19'1 x 19'0 (5.82m x 5.80m)

Guest Bedroom: 15'3 x 7'8 (4.65m x 2.34m)

Shower Room

FIRST FLOOR

Landing

Bedroom 1: 15'2 x 9'8 (4.63m x 2.95m)

Bedroom 2: 11'7 x 8'7 (3.53m x 2.62m)

Bedroom 3: 8'6 x 6'6 (2.59m x 1.98m)

Bathroom

OUTSIDE

Rear Garden

Off Street Parking



Main features

- Spacious, extended end of terrace house with off street parking
- Bi-folding doors open onto large rear garden
- Walking distance to Goodmayes station, ideal for daily commuting
- Additional guest bedroom
- Close to local schools, places of worship & amenities



Nearest Schools

Primary Schools: Barley Lane Primary 0.6 miles, Grove Primary 0.7 miles, Chadwell Primary 0.9 miles

Secondary Schools: Newbridge School 0.5 miles, The Chadwell Heath Foundation School 0.6 miles, Little Heath

Transport Information

Train Stations: Goodmayes 0.7 miles, Chadwell Heath 1.4 miles, Seven Kings 1.9 miles

Underground Newbury Park 2.1 miles, Dagenham Heathway 2.5 miles

Address

Langham Drive, Chadwell Heath, Essex, RM6



Directions

For directions to this property please contact us.



Call Chadwell Heath Branch 020 8597 0043 ■ [douglasallen.co.uk](https://www.douglasallen.co.uk)



- A private rental licensing scheme applies to some properties in this area, please contact us before proceeding
- Appliances & services are untested, dimensions are approximate and floor plans are not to scale

- Legal advice should be taken to verify fixtures/fittings, planning, alterations and/or lease details
- Through a Homewise Home For Life Plan people aged 60+ can secure this property for up to 59% less, by purchasing a Lifetime Lease.



50705772/20240706/CN/AV