



Price
£465,000

Freehold

3x  1x  1x 

**Cecil Road, Chadwell
Heath, Essex, RM6**

OVER 60?

Secure this property
for up to **59% less!**

 **DOUGLAS
ALLEN**
Helping you move forwards



Main features

- Attractive terraced house situated in the popular Redbridge Borough
- Close to Chadwell Heath station, ideal for daily commuting
- Entrance porch for added security
- First floor family bathroom
- Walking distance to local amenities, shops & restaurants

Accommodation

GROUND FLOOR

Entrance Porch

Entrance Hall

Lounge/Dining Area: 23'3 x 13'1 (7.09m x 3.99m)

Kitchen: 10'9 x 7'5 (3.28m x 2.26m)

FIRST FLOOR

Landing

Bedroom 1: 13'5 x 11'5 (4.09m x 3.48m)

Bedroom 2: 11'2 x 10'5 (3.41m x 3.18m)

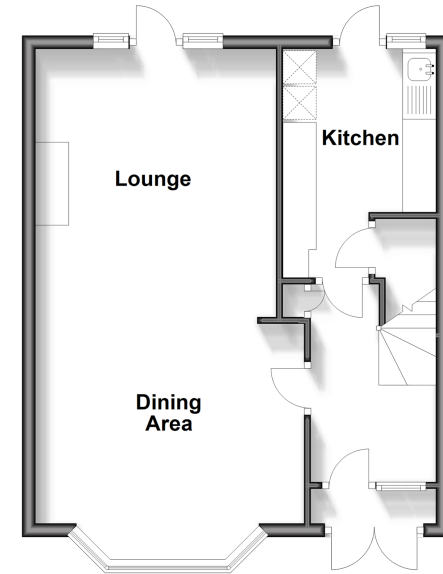
Bedroom 3: 8'3 x 7'9 (2.52m x 2.36m)

Bathroom

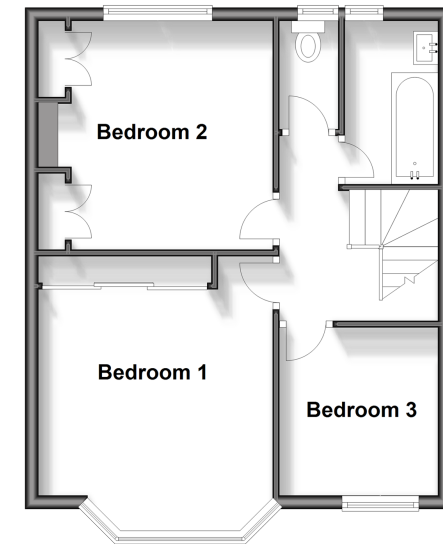
OUTSIDE

Front & Rear Garden

Ground Floor
Approx. 42.3 sq. metres (455.6 sq. feet)



First Floor
Approx. 43.6 sq. metres (469.0 sq. feet)



Call Chadwell Heath - 020 8597 0043 ■ douglasallen.co.uk

- A private rental licensing scheme applies to some properties in this area, please contact us before proceeding
- Legal advice should be taken to verify fixtures/fittings, planning, alterations and/or lease details
- Appliances & services are untested, dimensions are approximate and floor plans are not to scale
- Through a Homewise Home For Life Plan people aged 60+ can secure this property for up to 59% less, by purchasing a Lifetime Lease.



50713061/20241019/CN/MH