



**Price**  
**£500,000**

**Freehold**

3x  1x  1x 

**Blackbush Avenue,  
Romford, Essex, RM6**

**OVER 60?**

Secure this property  
for up to **59% less!**

 **DOUGLAS  
ALLEN**  
Helping you move forwards



## Main features

- Well presented terraced house situated in the Redbridge Borough
- Spacious modern kitchen/breakfast room
- Large decked patio area
- Off street parking
- Close to good Schools & places of worship

## Accommodation

### GROUND FLOOR

Entrance Porch

Entrance Hall

Lounge/Diner: 15'11 x 11'8 (4.85m x 3.56m)  
narrowing to 14'5 x 10'6 (4.40m x 3.20m)

Kitchen/Breakfast Room: 20'10 x 16'5  
(6.35m x 5.01m) narrowing to 10'2 x 6'0  
(3.10m x 1.83m)

### FIRST FLOOR

Landing

Bedroom 1: 13'9 x 10'10 (4.19m x 3.30m)

Bedroom 2: 15'5 x 10'10 (4.70m x 3.30m)

Bedroom 3: 8'8 x 6'4 (2.64m x 1.93m)

Bathroom

### OUTSIDE

Rear Garden

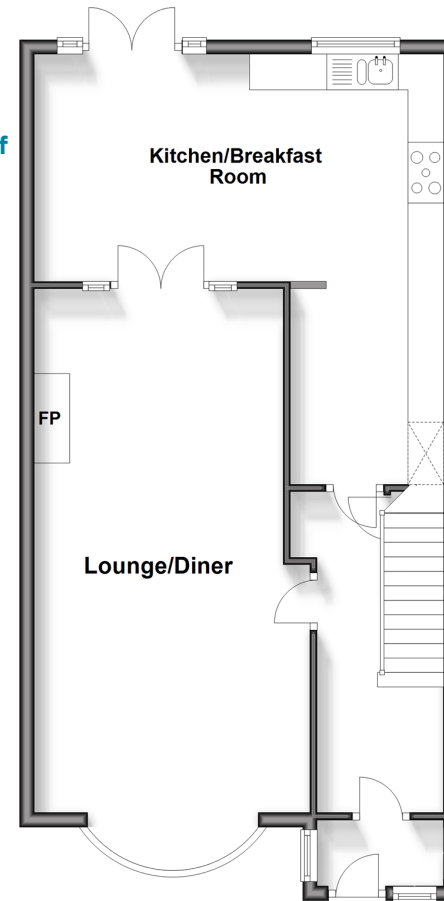
Off Street Parking

**Call Chadwell Heath - 020 8597 0043 ■ [douglasallen.co.uk](http://douglasallen.co.uk)**

- A private rental licensing scheme applies to some properties in this area, please contact us before proceeding
- Legal advice should be taken to verify fixtures/fittings, planning, alterations and/or lease details
- Appliances & services are untested, dimensions are approximate and floor plans are not to scale
- Through a Homewise Home For Life Plan people aged 60+ can secure this property for up to 59% less, by purchasing a Lifetime Lease.

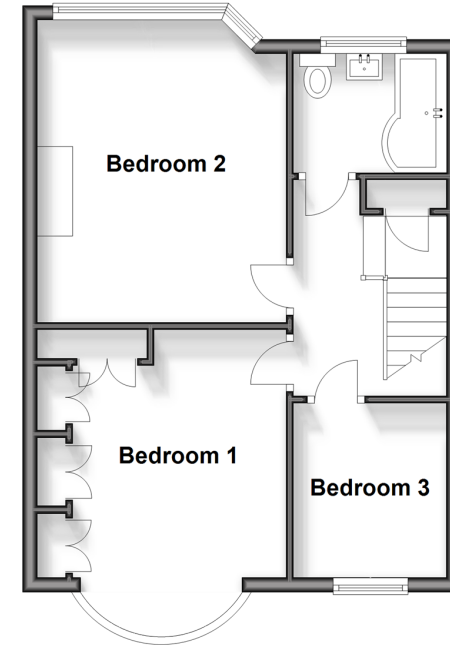
### Ground Floor

Approx. 63.0 sq. metres (678.4 sq. feet)



### First Floor

Approx. 43.8 sq. metres (471.1 sq. feet)



50713875/20240615/CN/MH