



Price

£550,000

Freehold

3x  1x  1x 

**West Road, Chadwell
Heath, Romford, Essex,
RM6**

OVER 60?

Secure this property
for up to **59% less!**

 **DOUGLAS
ALLEN**
Helping you move forwards



Main features

- Beautifully presented end of terrace house with spacious lounge
- Open plan kitchen/dining area
- Separate first floor dressing room
- Close to Chadwell Heath station, ideal for commuting
- Summer House to the rear

Accommodation

GROUND FLOOR

Entrance Porch

Lounge: 12'10 x 11'11 (3.91m x 3.63m) plus 7'2 x 11'11 (2.19m x 3.63m)

Kitchen/Dining Area: 11'2 x 10'11 (3.41m x 3.33m) plus 10'10 x 10'10 (3.30m x 3.30m)

Bathroom

FIRST FLOOR

Landing

Bedroom 1: 14'10 x 10'3 (4.52m x 3.13m)

Bedroom 2: 11'6 x 10'8 (3.51m x 3.25m)

Bedroom 3: 10'4 x 9'9 (3.15m x 2.97m)

Dressing Area: 13'1 x 7'2 (3.99m x 2.19m)

OUTBUILDING

Summer House

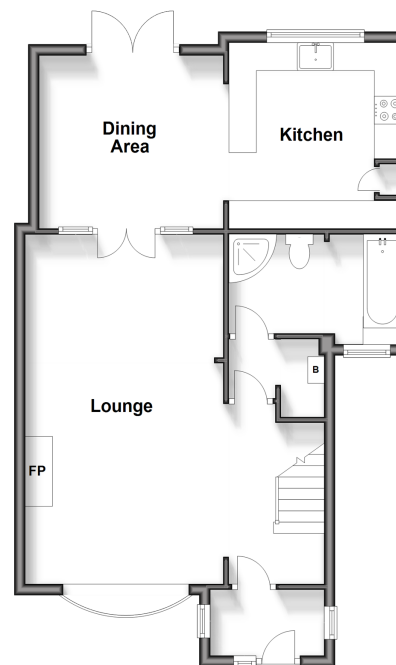
Storage

Workshop

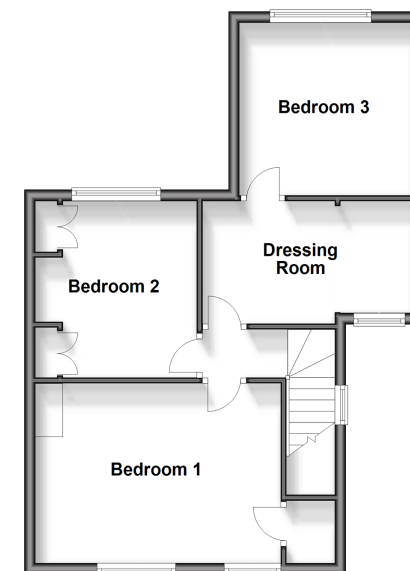
OUTSIDE

Rear Garden

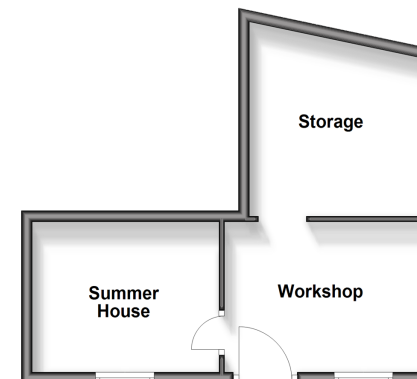
Ground Floor
Approx. 61.9 sq. metres (666.4 sq. feet)



First Floor
Approx. 47.9 sq. metres (515.7 sq. feet)

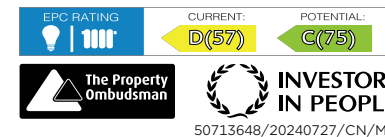


Outbuilding
Approx. 29.7 sq. metres (319.4 sq. feet)



Call Chadwell Heath - 020 8597 0043 ■ douglasallen.co.uk

- A private rental licensing scheme applies to some properties in this area, please contact us before proceeding
- Legal advice should be taken to verify fixtures/fittings, planning, alterations and/or lease details
- Appliances & services are untested, dimensions are approximate and floor plans are not to scale
- Through a Homewise Home For Life Plan people aged 60+ can secure this property for up to 59% less, by purchasing a Lifetime Lease.



50713648/20240727/CN/MH