



Price

£265,000

Leasehold

2x  1x  1x 

Overton Drive, Chadwell
Heath, Essex, RM6



Main features

- Well presented first floor purpose built flat
- Light & spacious lounge/diner
- Communal gardens & parking
- Close to Chadwell Heath station/Elizabeth Line, ideal for commuting
- Ideal purchase for any first time buyers or buy-to-let investors

Accommodation

FIRST FLOOR

Entrance Hall

Lounge/Diner: 16'11 x 14'1 (5.16m x 4.30m)

Kitchen: 11'4 x 6'9 (3.46m x 2.06m)

Bedroom 1: 12'0 x 9'3 (3.66m x 2.82m)

Bedroom 2: 10'5 x 6'3 (3.18m x 1.91m)

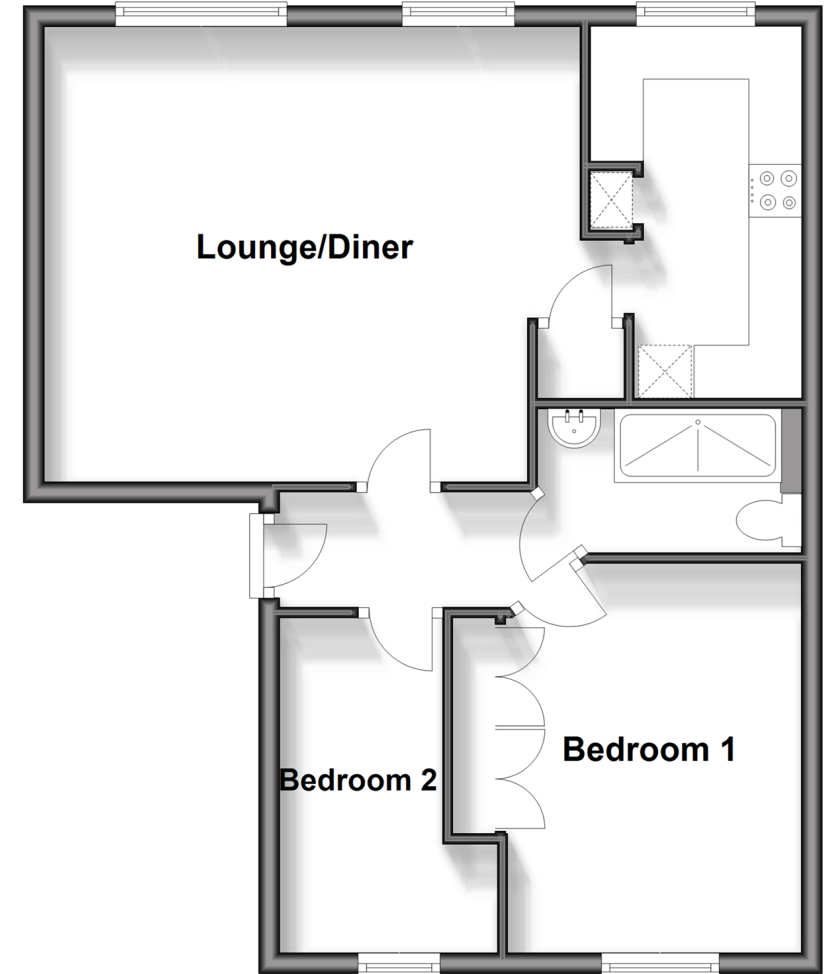
Shower Room

OUTSIDE

Communal Parking

Communal Gardens

First Floor
Approx. 53.2 sq. metres (572.7 sq. feet)



Call Chadwell Heath - 020 8597 0043 ■ douglasallen.co.uk

- A private rental licensing scheme applies to some properties in this area, please contact us before proceeding
- Legal advice should be taken to verify fixtures/fittings, planning, alterations and/or lease details
- Appliances & services are untested, dimensions are approximate and floor plans are not to scale



50713859/20240810/CN/MH