



Price
£325,000

Leasehold

2x  2x  1x 

**Fullerton Avenue,
Dagenham**

OVER 60?

Secure this property
for up to **59% less!**

 **DOUGLAS
ALLEN**
Helping you move forwards



Main features

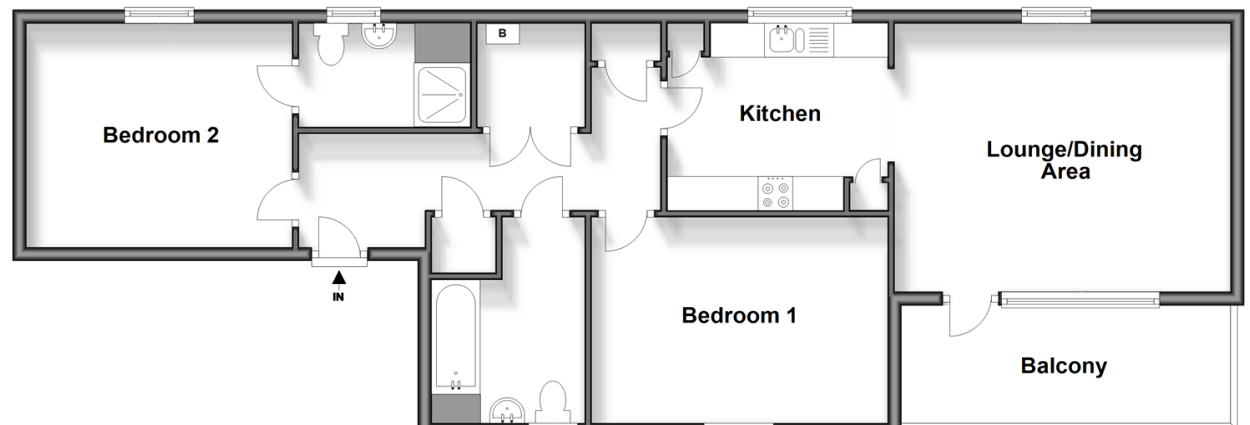
- Purpose built flat with own balcony
- Bright and spacious throughout
- Shops and amenities within walking distance
- Close to Chadwell Heath Station and Goodmayes Station
- Bus links to Westfield Stratford

Accommodation

FIRST FLOOR

- Hallway
- Lounge/Dining Area: 15'9 x 12'9 (4.80m x 3.89m)
- Kitchen: 10'5 x 9'1 (3.18m x 2.77m)
- Bedroom 1: 12'7 x 10'7 (3.84m x 3.23m)
- En-Suite
- Bedroom 2: 13'9 x 9'9 (4.19m x 2.97m)
- Bathroom
- Balcony

First Floor
Approx. 77.4 sq. metres (833.3 sq. feet)



Call Chadwell Heath - 020 8597 0043 ■ douglasallen.co.uk

- A private rental licensing scheme applies to some properties in this area, please contact us before proceeding
- Appliances & services are untested, dimensions are approximate and floor plans are not to scale

- Legal advice should be taken to verify fixtures/fittings, planning, alterations and/or lease details
- Through a Homewise Home For Life Plan people aged 60+ can secure this property for up to 59% less, by purchasing a Lifetime Lease.



50713829/20240524/CN/NK