



OVER 60?

Secure this property
for up to **59% less!**

Price

£325,000

Leasehold

2x  1x  1x 

**Dukes Farm Road,
Billericay, Essex, CM12**

 **DOUGLAS
ALLEN**
Helping you move forwards



Main features

- Bright and spacious ground floor maisonette
- Two double bedrooms
- Open plan living/dining/kitchen
- Beautifully maintained rear garden
- In catchment to local well regarded schools

Accommodation

GROUND FLOOR

Entrance Hall

Kitchen : 12'5 x 10'2 (3.79m x 3.10m)

Lounge/Diner: 14'9 x 11'10 (4.50m x 3.61m)

Bedroom 1: 12'7 x 10'3 (3.84m x 3.13m)

Bedroom 2: 11'6 x 9'3 (3.51m x 2.82m)

Bathroom

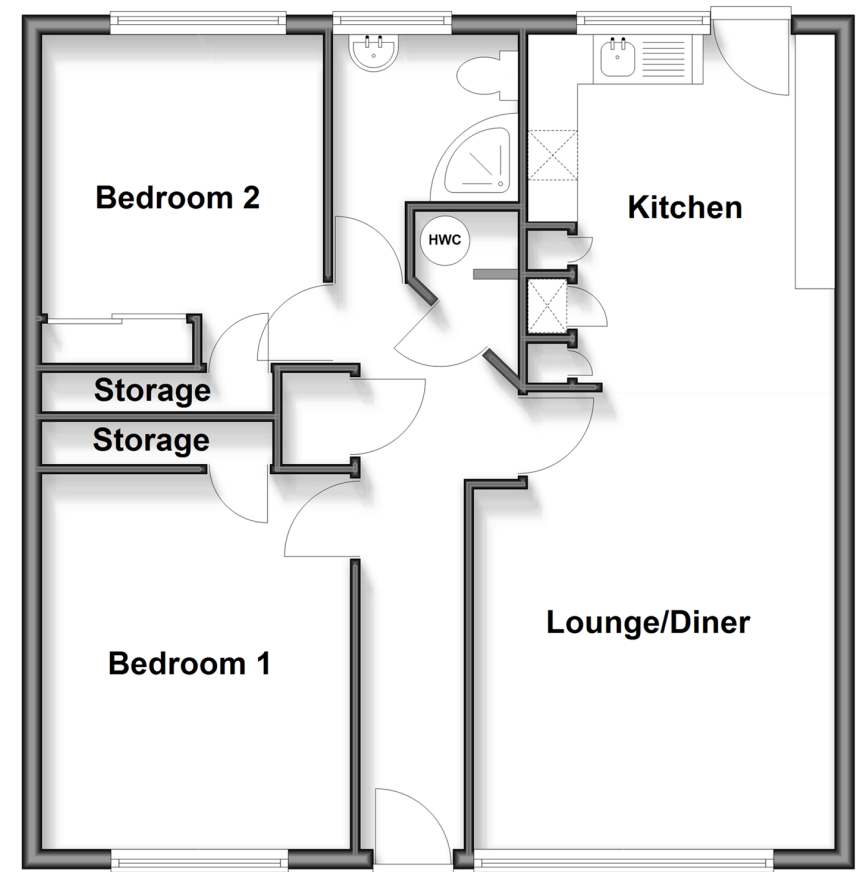
OUTSIDE

Rear Garden

Garage

Ground Floor

Approx. 65.9 sq. metres (709.7 sq. feet)



Call Billericay - 01277 631377 ■ douglasallen.co.uk

- Legal advice should be taken to verify fixtures/fittings, planning, alterations and/or lease details
- Appliances & services are untested, dimensions are approximate and floor plans are not to scale
- Through a Homewise Home For Life Plan people aged 60+ can secure this property for up to 50% less, by purchasing a Lifetime Lease.



50313420/20251018/KM/RG