



**OVER 60?**

Secure this property  
for up to **59% less!**

**Price**

**£625,000**

**Freehold**

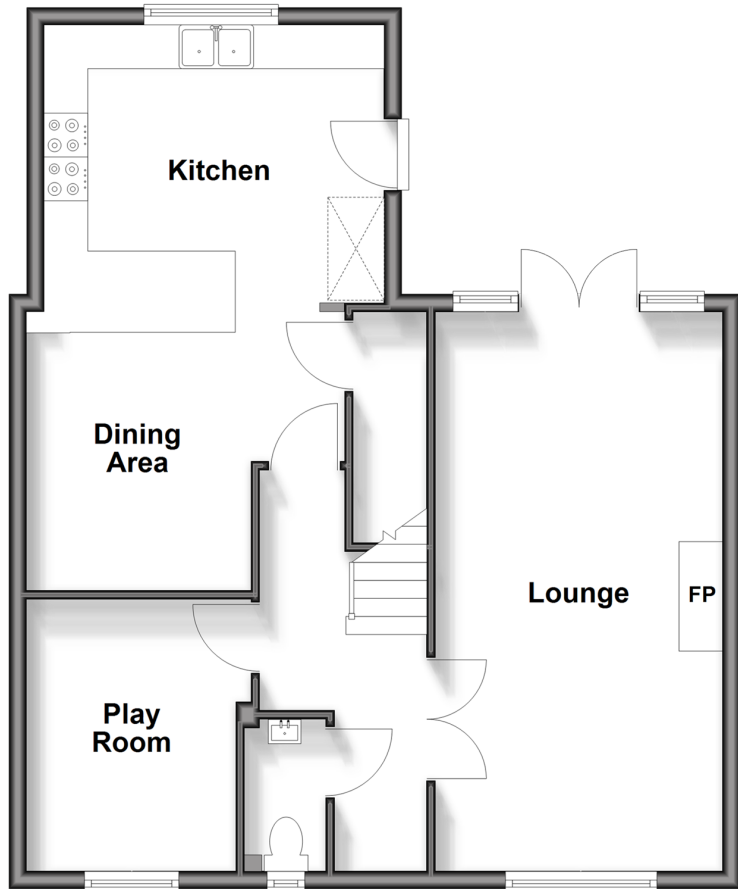
4x  2x  3x 

**Greens Farm Lane,  
Billericay, Essex, CM11**

 **DOUGLAS  
ALLEN**  
Helping you move forwards

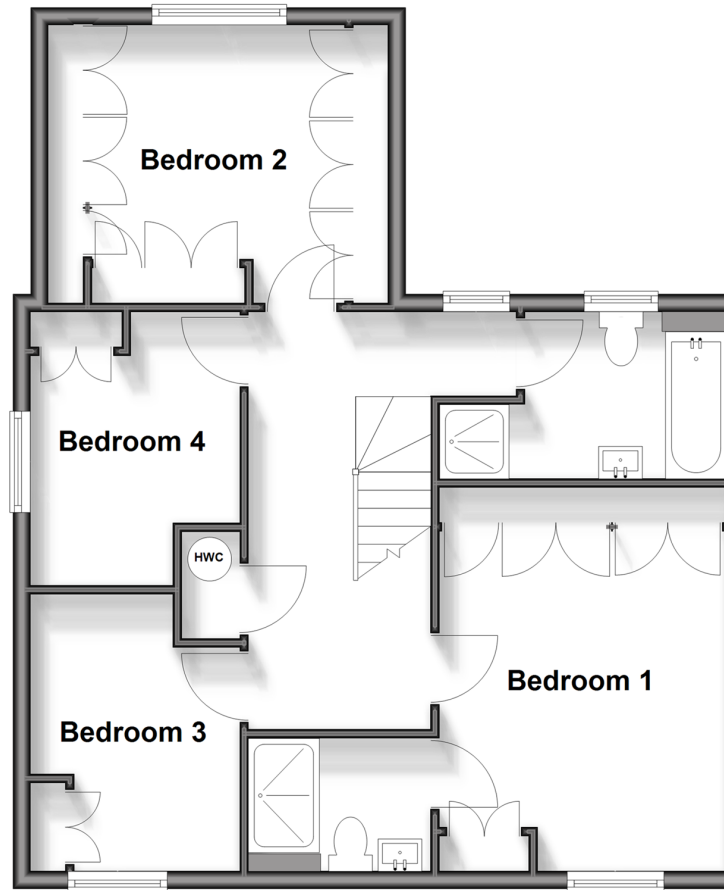
## Ground Floor

Approx. 63.6 sq. metres (684.6 sq. feet)



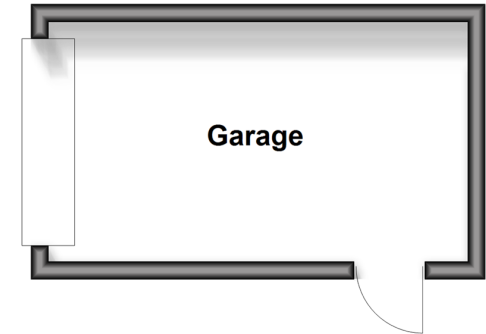
## First Floor

Approx. 63.6 sq. metres (684.6 sq. feet)



## Garage

Approx. 13.2 sq. metres (141.7 sq. feet)



## Accommodation

### GROUND FLOOR

Entrance Hall

Cloakroom

Lounge: 21'0 x 10'9 (6.41m x 3.28m)

Play room: 10'4 x 8'6 (3.15m x 2.59m)

Kitchen/Dining Area: 21'6 x 12'9 (6.56m x 3.89m)

### FIRST FLOOR

Landing

Bedroom 1: 14'5 x 10'9 (4.39m x 3.28m)

En-Suite Shower Room

Bedroom 2: 12'9 x 10'7 (3.89m x 3.23m)

Bedroom 3: 10'4 x 7'10 (3.15m x 2.39m)

Bedroom 4: 10'0 x 7'10 (3.05m x 2.39m)

Family Bathroom

### OUTSIDE

Front and Rear Garden

Garage

Allocated Parking





## Main features

- Immaculately and well presented home perfect for a growing family
- Downstairs lounge room
- No onward chain
- En suite to main bedroom
- Modern kitchen family room perfect for entertaining



### Nearest Schools

Primary Schools: Sunnymede Junior School 0.3 miles, South Green Junior School 0.4 miles, Quilters Junior School 0.6 miles.  
Secondary Schools: The Billericay School 0.5 miles, St John's School 0.9 miles, Ramsden Hall School 1.1 miles.



### Transport Information

Train Stations: Billericay 0.8 miles, Laindon 3.6 miles, Ingatestone 3.7 miles.  
Underground Upminster 8.8 miles, Upminster Bridge 9.3 miles.



### Address

Greens Farm Lane, Billericay, Essex, CM11



### Directions

For directions to this property please contact us.





Call Billericay Branch 01277 631377 ■ [douglasallen.co.uk](https://douglasallen.co.uk)



■ Legal advice should be taken to verify fixtures/fittings, planning, alterations and/or lease details ■ Appliances & services are untested, dimensions are approximate and floor plans are not to scale  
■ Through a Homewise Home For Life Plan people aged 60+ can secure this property for up to 59% less, by purchasing a Lifetime Lease.



50313314/20250314/MF/BH