



**Price**

**£750,000**

**Freehold**

4x  2x  2x 

**Goldcrest Drive,  
Billericay, Essex, CM11**

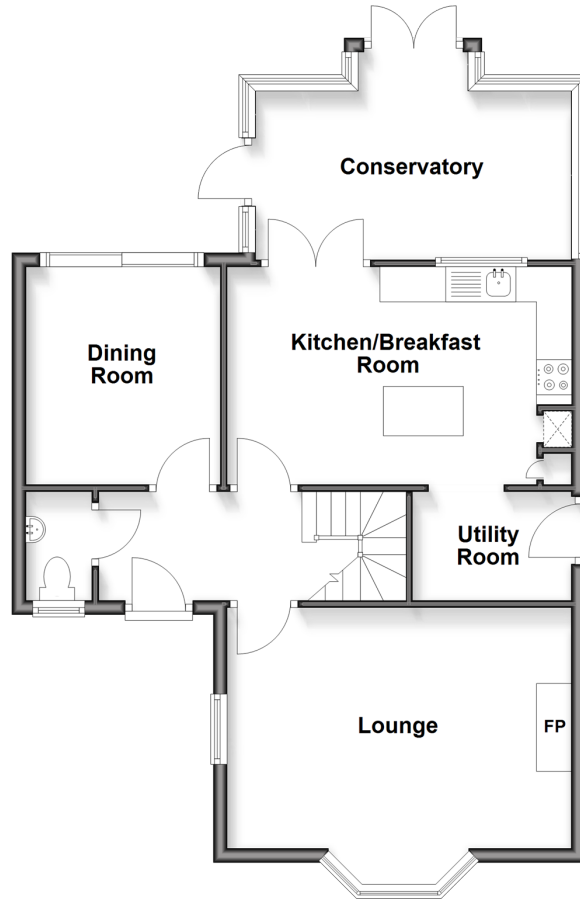
**OVER 60?**

Secure this property  
for up to **59% less!**

 **DOUGLAS  
ALLEN**  
Helping you move forwards

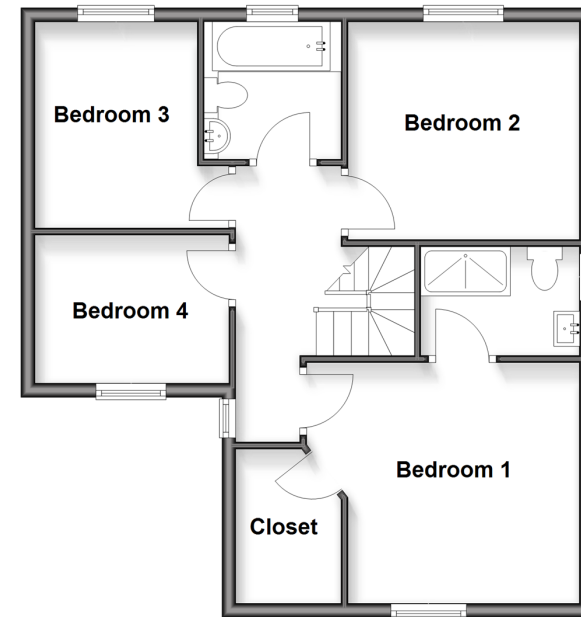
### Ground Floor

Approx. 66.7 sq. metres (718.1 sq. feet)



### First Floor

Approx. 55.4 sq. metres (596.8 sq. feet)



## Accommodation

### GROUND FLOOR

Entrance Hall

Lounge: 15'9 x 11'2 (4.80m x 3.41m)

Kitchen/Breakfast Room: 16'1 x 10'1  
(4.91m x 3.08m)

Dining Room

Utility Room: 7'3 x 3'2 (2.21m x 0.97m)

Conservatory: 13'2 x 9'4 (4.02m x  
2.85m)

Cloakroom

### FIRST FLOOR

Landing

Bedroom 1: 11'4 x 10'8 (3.46m x 3.25m)

Closet

Bedroom 2: 9'2 x 7'2 (2.80m x 2.19m)

Bedroom 3: 9'4 x 7'6 (2.85m x 2.29m)

Bedroom 4: 10'8 x 10'4 (3.25m x 3.15m)

### OUTSIDE

Rear Garden

Double Garage

Off Road Parking





## Main features

- Highly sought after Mill Grange Development
- Directly backs onto Mill Meadows
- Muntjac deer can be frequently sighted
- Double garage with power and light and off road parking
- Spacious kitchen and utility room and en-suite to bedroom 1 with a walk-in wardrobe



### Nearest Schools

Primary Schools: Sunnymede Junior School 0.2 miles, Quilters Junior School 0.5 miles, South Green Junior School 0.6 miles

Secondary Schools: The Billericay School 0.5 miles, St



### Transport Information

Train Stations: Billericay 0.6 miles, Ingatestone 3.6 miles, Laindon 3.7 miles



### Address

Goldcrest Drive, Billericay, Essex, CM11



### Directions

For directions to this property please contact us.





Call Billericay Branch 01277 631377 ■ [douglasallen.co.uk](https://douglasallen.co.uk)



- Legal advice should be taken to verify fixtures/fittings, planning, alterations and/or lease details
- Appliances & services are untested, dimensions are approximate and floor plans are not to scale
- Through a Homewise Home For Life Plan people aged 60+ can secure this property for up to 59% less, by purchasing a Lifetime Lease.



50313301/20250308/MF/BH