



Price

£1,195,000

Freehold

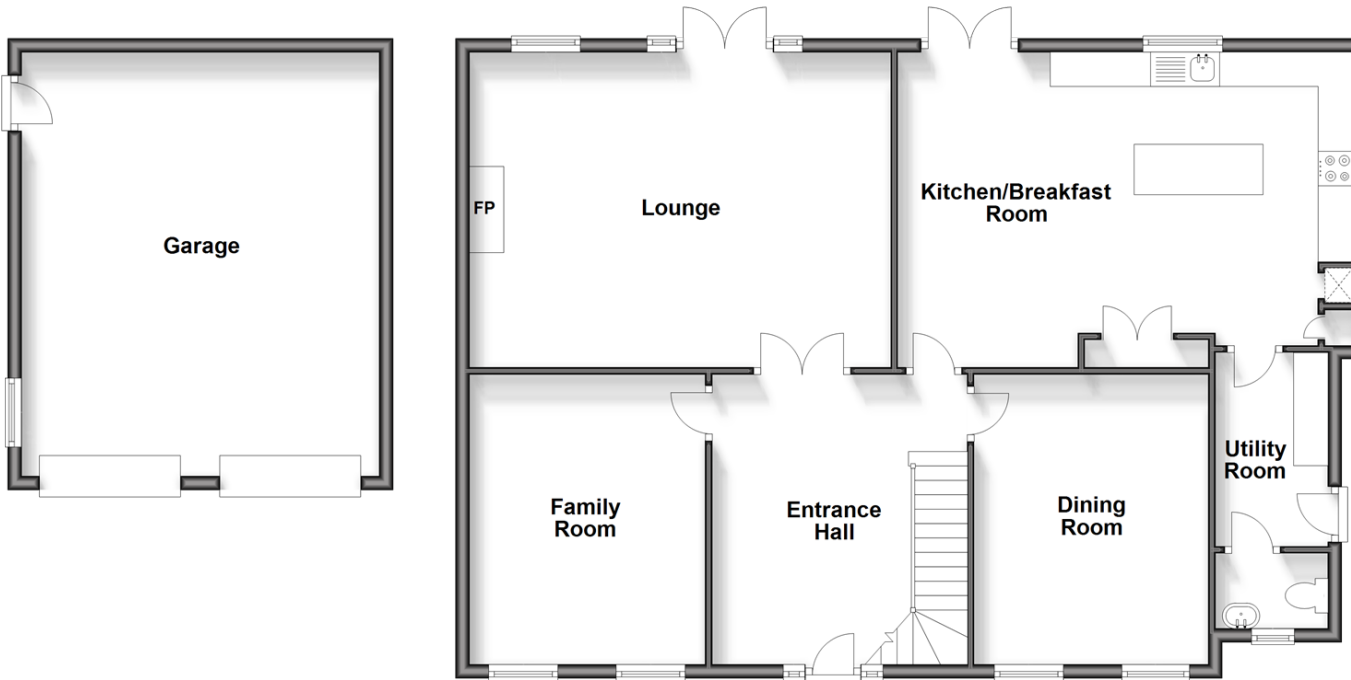
4x  2x  3x 

Church Street, Billericay, Essex, CM11

 **DOUGLAS
ALLEN**
Helping you move forwards

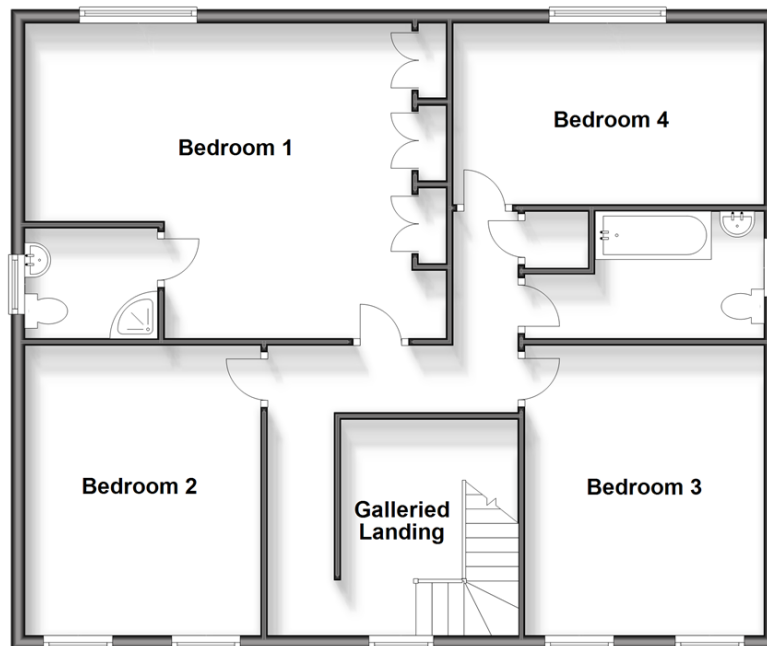
Ground Floor

Approx. 111.1 sq. metres (1196.1 sq. feet)



First Floor

Approx. 95.1 sq. metres (1024.1 sq. feet)



Accommodation

GROUND FLOOR

Grand Entrance Hall: 13'10 x 12'0 (4.22m x 3.66m)

Lounge: 18'7 x 14'11 (5.67m x 4.55m)

Family Room: 13'10 x 11'3 (4.22m x 3.43m)

Kitchen/Breakfast Room: 21'3 x 14'1 (6.48m x 4.30m)

Utility Room: 9'3 x 5'5 (2.82m x 1.65m)

Dining Room : 13'10 x 11'2 (4.22m x 3.41m)

Cloakroom

FIRST FLOOR

Galleried Landing

Bedroom 1: 20'0 x 15'0 (6.10m x 4.58m)

En-Suite Shower Room

Bedroom 2: 13'9 x 11'3 (4.19m x 3.43m)

Bedroom 3: 13'9 x 11'3 (4.19m x 3.43m)

Bedroom 4: 14'0 x 8'9 (4.27m x 2.67m)

Family Bathroom

OUTSIDE

Rear Garden

Double Garage

Off Street Parking



Main features

- Executive detached house in a private road location
- Impressive property throughout
- Grand entrance hallway and galleried staircase
- Stunning kitchen/breakfast room with utility room
- Large lounge plus family room and separate dining room
- Double garage and plenty of off street parking



Nearest Schools

Primary Schools: South Green Junior School 0.9 miles, St Peter's Catholic Primary 1.3 miles, Laindon Park Primary 1.6 miles



Transport Information

Train Stations: Billericay 2.3 miles, Laindon 3.5 miles, Basildon 3.7 miles



Address

Church Street, Billericay, Essex, CM11



Directions

For directions to this property please contact us.



Call Billericay Branch 01277 631377 ■ douglasallen.co.uk

