



Price

£550,000

Freehold

2x  2x  1x 

Mill Road, Billericay,
Essex, CM11

OVER 60?

Secure this property
for up to **59% less!**

 **DOUGLAS
ALLEN**
Helping you move forwards



Main features

- Kitchen/Dining room with bi-fold doors
- Ground floor shower room plus family bathroom
- Large garden with stunning views over open countryside
- Juliet balcony to bedroom 2
- Outbuilding which is currently used as a bedroom

Accommodation

GROUND FLOOR

Hallway

Lounge: 11'11 x 11'4 (3.63m x 3.46m)

Kitchen/Dining Room: 20'7 x 15'4 (6.28m x 4.68m)

Shower Room: 8'2 x 4'10 (2.49m x 1.47m)

FIRST FLOOR

Landing

Bedroom 1: 12'7 x 11'3 (3.84m x 3.43m)

Bedroom 2: 13'8 x 9'10 (4.17m x 3.00m)

Bathroom: 7'9 x 5'7 (2.36m x 1.70m)

OUTBUILDING

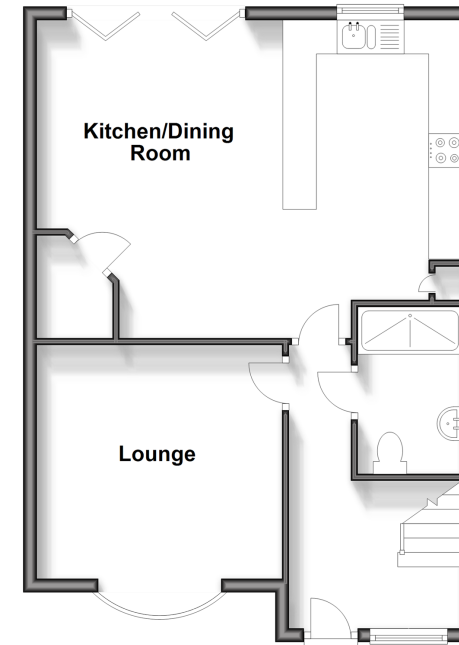
Room 1

OUTSIDE

Driveway

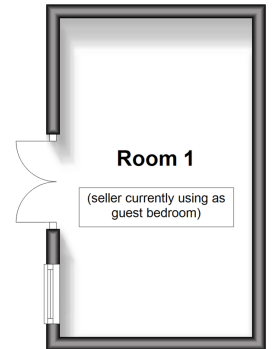
Ground Floor

Approx. 54.6 sq. metres (588.1 sq. feet)



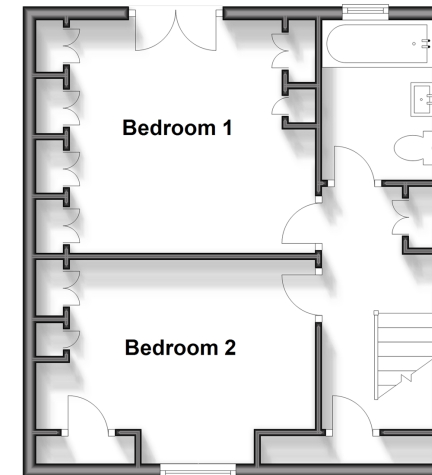
Outbuilding

Approx. 13.6 sq. metres (145.9 sq. feet)



First Floor

Approx. 39.1 sq. metres (421.0 sq. feet)



Call Billericay - 01277 631377 ■ douglasallen.co.uk

- Legal advice should be taken to verify fixtures/fittings, planning, alterations and/or lease details
- Appliances & services are untested, dimensions are approximate and floor plans are not to scale
- Through a Homewise Home For Life Plan people aged 60+ can secure this property for up to 59% less, by purchasing a Lifetime Lease.



50312882/20241019/AV/AA