



Price
£865,000

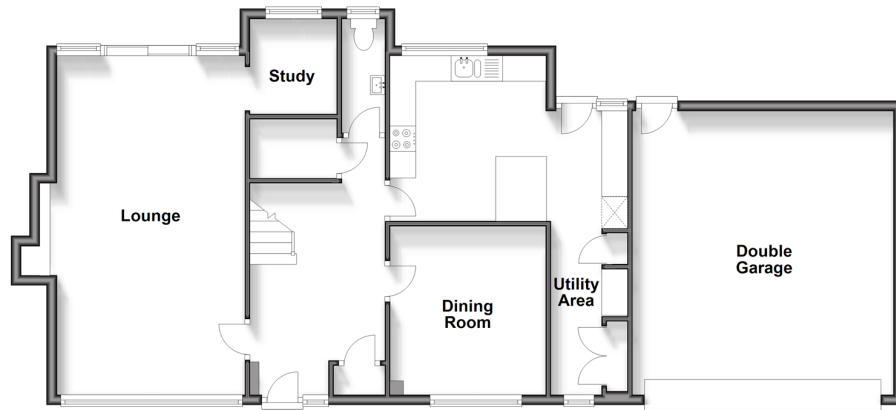
Freehold

4x  1x  2x 

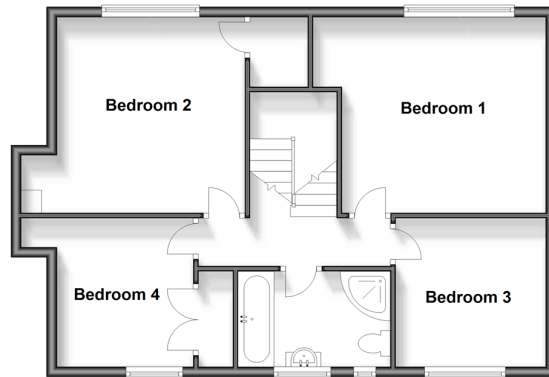
**Tor Bryan, Ingatestone,
Essex, CM4**

 **DOUGLAS
ALLEN**
Helping you move forwards

Ground Floor
Approx. 103.0 sq. metres (1108.9 sq. feet)



First Floor
Approx. 66.0 sq. metres (709.9 sq. feet)



Outbuilding

Approx. 3.4 sq. metres (36.8 sq. feet)



Accommodation

GROUND FLOOR

Hallway
Lounge: 21'7 x 11'11 (6.58m x 3.63m)
Kitchen: 10'7 x 9'10 (3.23m x 3.00m)
Utility Area: 17'11 x 5'2 (5.46m x 1.58m)
Dining Room: 10'10 x 9'10 (3.30m x 3.00m)
Study: 6'5 x 4'11 (1.96m x 1.50m)
Cloakroom

FIRST FLOOR

Landing
Bedroom 1: 14'7 x 12'8 (4.45m x 3.86m)
Bedroom 2: 14'4 x 12'8 (4.37m x 3.86m)
Bedroom 3: 9'5 x 8'10 (2.87m x 2.69m)
Bedroom 4: 8'10 x 8'7 (2.69m x 2.62m)
Bathroom

OUTBUILDING

Garden Room/Office

OUTSIDE

Rear Garden
Double Width Garage
Driveway



Main features

- Sought after unique private estate
- Lounge with floor to ceiling windows with an addition of a log burner
- Double width garage plus ample off street parking
- Welcoming entrance hallway
- Modern kitchen, utility area and separate dining room
- Study and ground floor cloakroom

Nearest Schools

Primary Schools: Ingatestone and Fryerning C of E Voluntary Aided Junior School 0.4 miles, Mountnessing C of E Voluntary Controlled Primary 1.1 miles, Brightside Primary 2.1 miles

Transport Information

Train Stations: Ingatestone 0.3 miles, Billericay 2.9 miles, Shenfield 3.0 miles

Address

Tor Bryan, Ingatestone, Essex, CM4

Directions

For directions to this property please contact us.

