



Price
£415,000

Freehold

3x  1x  1x 

**Hazel Close, Laindon,
Basildon, Essex, SS15**

OVER 60?

Secure this property
for up to **59% less!**

 **DOUGLAS
ALLEN**
Helping you move forwards



Main features

- Modernised throughout with potential to extend to the rear and the loft
- New combi boiler recently installed
- Sharps fitted wardrobes in bedroom 1
- Refurbished en-suite shower room and new bathroom
- Off street parking and garage

Accommodation

GROUND FLOOR

Porch

Lounge: 15'2 x 12'9 (4.63m x 3.89m)

Kitchen/Dining Room: 16'2 x 11'5 (4.93m x 3.48m)

FIRST FLOOR

Landing

Bedroom 1: 12'5 x 9'5 (3.79m x 2.87m)

En-Suite Shower Room

Bedroom 2: 10'5 x 9'4 (3.18m x 2.85m)

Bedroom 3: 10'9 x 6'4 (3.28m x 1.93m)

Bathroom: 6'5 x 6'2 (1.96m x 1.88m)

OUTSIDE

Rear Garden

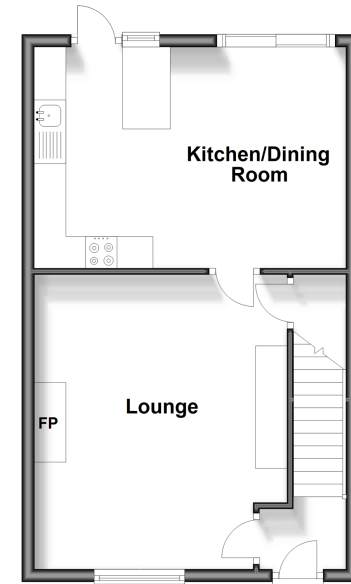
Off Street Parking

Garage

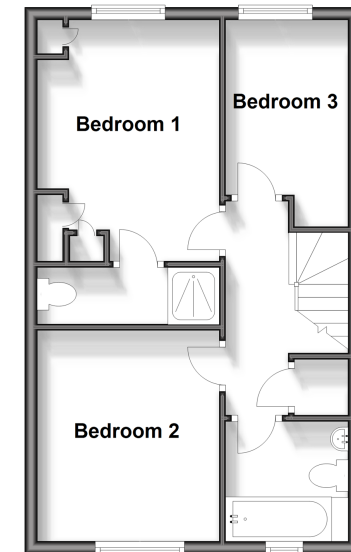
Call Billericay - 01277 631377 ■ douglasallen.co.uk

- Legal advice should be taken to verify fixtures/fittings, planning, alterations and/or lease details
- Appliances & services are untested, dimensions are approximate and floor plans are not to scale
- Through a Homewise Home For Life Plan people aged 60+ can secure this property for up to 59% less, by purchasing a Lifetime Lease.

Ground Floor
Approx. 40.5 sq. metres (435.9 sq. feet)



First Floor
Approx. 40.5 sq. metres (435.9 sq. feet)



50506478/20240504/MB/AY