



**Price**  
**£500,000**

**Freehold**

4x  2x  2x 

**High Road North,  
Steeple View, Basildon,  
Essex, SS15**

**OVER 60?**

Secure this property  
for up to **59% less!**

 **DOUGLAS  
ALLEN**  
Helping you move forwards





## Main features

- Open plan kitchen/diner
- Conservatory and study
- Ground floor cloakroom and en-suite shower room
- Large rear garden, garage and driveway

## Accommodation

### GROUND FLOOR

Hallway  
 Living Room: 20'8 x 13'0 (6.30m x 3.97m)  
 Kitchen/Diner: 20'3 x 11'9 (6.18m x 3.58m)  
 Conservatory Area  
 Family Room: 11'7 x 9'2 (3.53m x 2.80m)  
 Study: 6'2 x 3'8 (1.88m x 1.12m)  
 Cloakroom

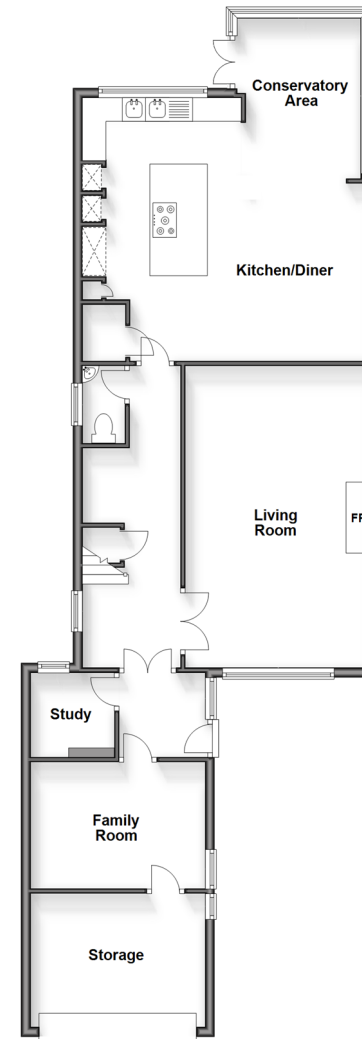
### FIRST FLOOR

Landing  
 Bedroom 1: 12'1 x 11'7 (3.69m x 3.53m)  
 Bedroom 2: 13'3 x 12'4 (4.04m x 3.76m)  
 En-Suite Shower Room: 6'1 x 4'1 (1.86m x 1.25m)  
 Bedroom 3: 16'4 x 6'9 (4.98m x 2.06m)  
 Bedroom 4: 12'3 x 7'7 (3.74m x 2.31m)  
 Bathroom: 8'9 x 7'8 (2.67m x 2.34m)

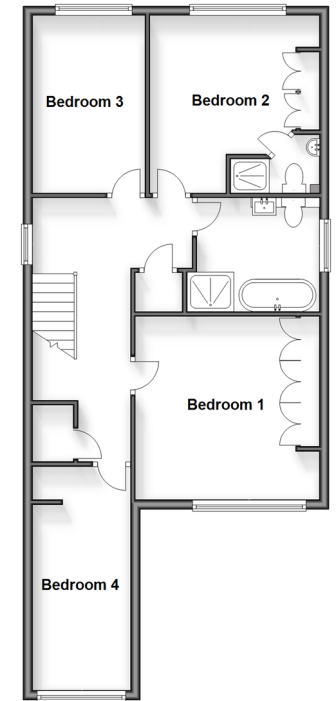
### OUTSIDE

Rear Garden  
 Off Street Parking

**Ground Floor**  
 Approx. 105.5 sq. metres (1135.5 sq. feet)



**First Floor**  
 Approx. 70.7 sq. metres (761.2 sq. feet)



**Call Billericay - 01277 631377 ■ douglasallen.co.uk**

- If buying to let, the energy rating will need to be improved to at least 'E' rating before you can let the property
- Legal advice should be taken to verify fixtures/fittings, planning, alterations and/or lease details
- Appliances & services are untested, dimensions are approximate and floor plans are not to scale
- Through a Homewise Home For Life Plan people aged 60+ can secure this property for up to 59% less, by purchasing a Lifetime Lease.



50313155/20240430/RP/AA