



Price
£450,000

Freehold

3x  2x  1x 

**Shalford Road,
Billericay, Essex, CM11**

OVER 60?

Secure this property
for up to **59% less!**

 **DOUGLAS
ALLEN**
Helping you move forwards



Main features

- 20' new kitchen/diner
- Good size study perfect for home workers
- Within catchment of local desirable schools
- Short walk to railway station and High Street
- Driveway for 2 cars

Accommodation

GROUND FLOOR

Hallway

Living Room: 20'3 x 13'11 (6.18m x 4.24m)

Kitchen/Diner: 23'6 x 15'7 (7.17m x 4.75m)

Conservatory

Study: 19'10 x 9'2 (6.05m x 2.80m)

FIRST FLOOR

Landing

Bedroom 1: 15'10 x 13'5 (4.83m x 4.09m)

En-Suite Shower Room

Bedroom 2: 15'12 x 12'11 (4.88m x 3.94m)

Bedroom 3: 16'3 x 10'7 (4.96m x 3.23m)

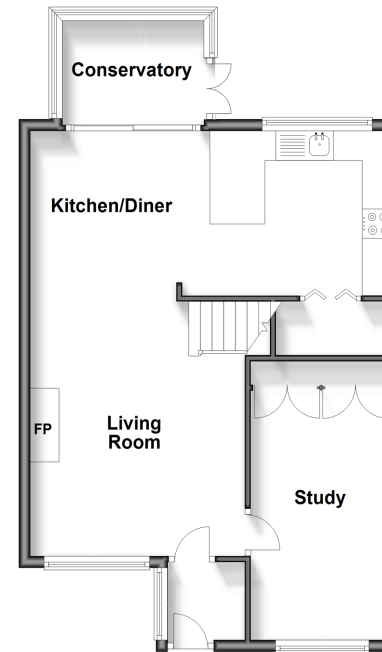
Bathroom

OUTSIDE

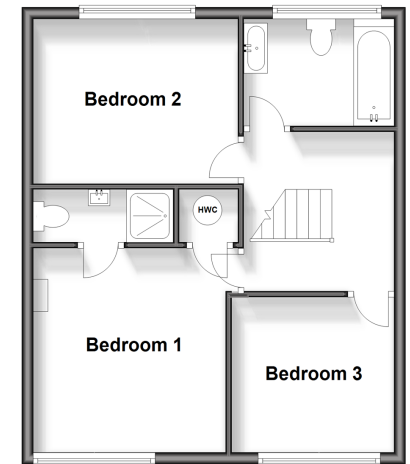
Front and Rear Gardens

Driveway

Ground Floor
Approx. 55.1 sq. metres (592.9 sq. feet)



First Floor
Approx. 45.9 sq. metres (494.1 sq. feet)



Call Billericay - 01277 631377 ■ douglasallen.co.uk

- Legal advice should be taken to verify fixtures/fittings, planning, alterations and/or lease details
- Appliances & services are untested, dimensions are approximate and floor plans are not to scale
- Through a Homewise Home For Life Plan people aged 60+ can secure this property for up to 59% less, by purchasing a Lifetime Lease.



50313144/20240214/RP/AA