



Price
£425,000

Freehold

3x  1x  1x 

**Fairview Avenue,
Hutton, Brentwood,
Essex CM13**

OVER 60?

Secure this property
for up to **59% less!**

 **DOUGLAS
ALLEN**
Helping you move forwards



Main features

- Spacious lounge/dining room and modern kitchen
- Generous size bedrooms
- Off-street parking for 2 cars
- Approx. 70ft. rear garden
- Convenient location for Shenfield railway station

Accommodation

GROUND FLOOR

Entrance Hallway

Lounge/Dining Room: 23'9 x 11'9
(7.24m x 3.58m)

Kitchen: 15'11 x 11'7 (4.85m x 3.53m)

FIRST FLOOR

Landing

Bedroom 1: 13'2 x 10'6 (4.02m x 3.20m)

Bedroom 2: 14'6 x 8'4 (4.42m x 2.54m)

Bedroom 3: 10'0 x 7'8 (3.05m x 2.34m)

Bathroom: 7'7 x 5'7 (2.31m x 1.70m)

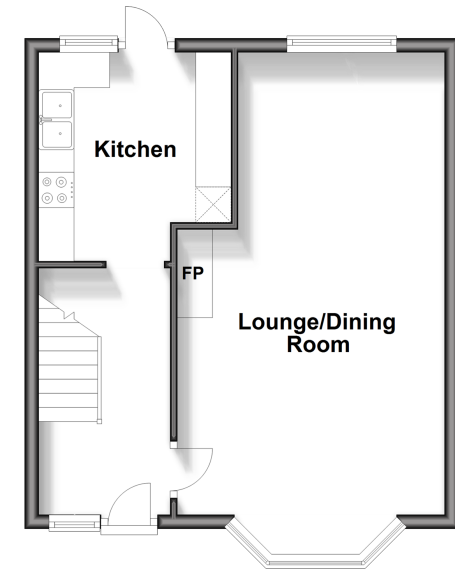
OUTSIDE

Front and Rear Gardens

Off-Street Parking

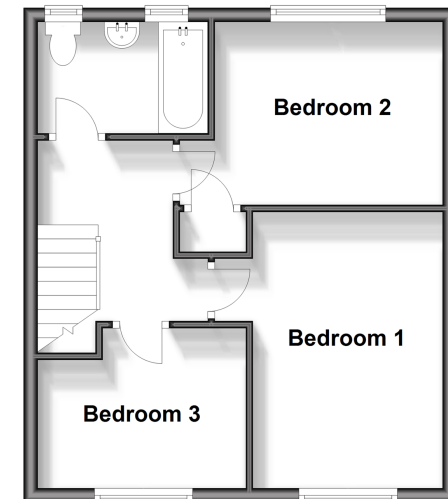
Ground Floor

Approx. 38.0 sq. metres (408.9 sq. feet)



First Floor

Approx. 38.0 sq. metres (409.2 sq. feet)



Call Billericay - 01277 631377 ■ douglasallen.co.uk

- Legal advice should be taken to verify fixtures/fittings, planning, alterations and/or lease details
- Appliances & services are untested, dimensions are approximate and floor plans are not to scale
- Through a Homewise Home For Life Plan people aged 60+ can secure this property for up to 59% less, by purchasing a Lifetime Lease.



50309401/20240224/RP/AA