



**Price**

**£950,000**

**Freehold**

4x  2x  3x 

**Broomhills Chase, Little  
Burstead, Billericay,  
Essex, CM12**

**OVER 60?**

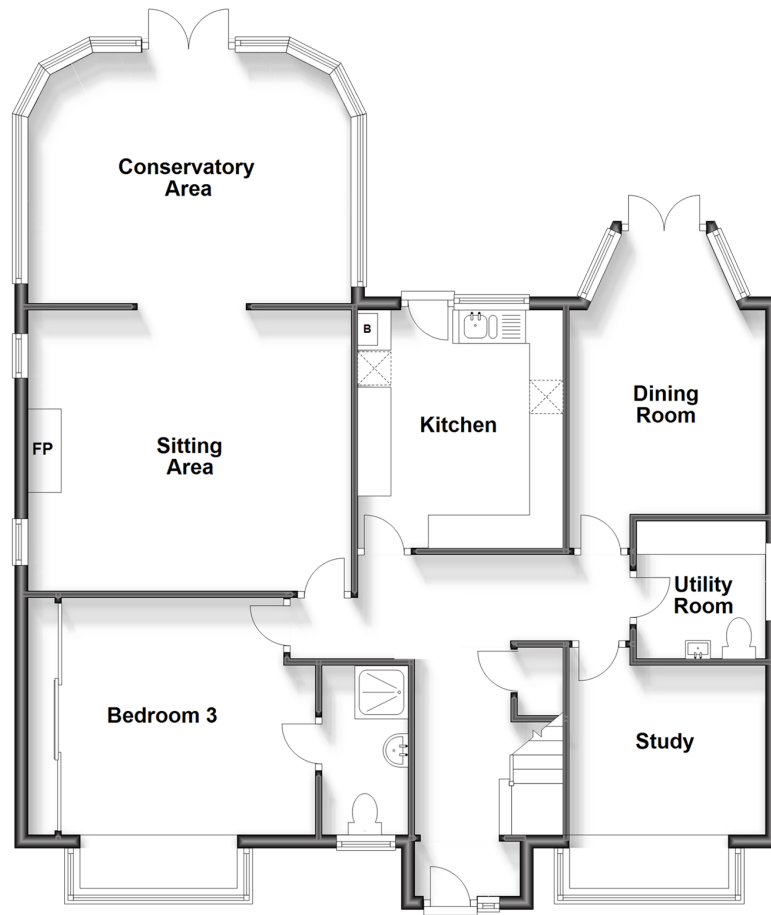
Secure this property  
for up to **59% less!**



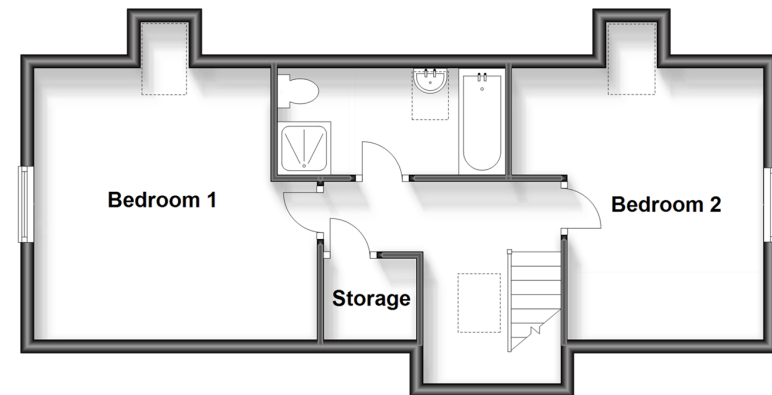
**DOUGLAS  
ALLEN**

Helping you move forwards

**Ground Floor**  
Approx. 92.6 sq. metres (996.3 sq. feet)



**First Floor**  
Approx. 47.1 sq. metres (506.5 sq. feet)



## Accommodation

### GROUND FLOOR

Hallway  
Sitting Area: 9'8 x 8'4 (2.95m x 2.54m)  
Kitchen: 12'0 x 10'3 (3.66m x 3.13m)  
Dining Room: 13'2 x 9'7 (4.02m x 2.92m)  
Utility Room: 7'5 x 6'2 (2.26m x 1.88m)  
Conservatory Area  
Study: 10'2 x 9'8 (3.10m x 2.95m)  
Bedroom 3: 15'7 x 11'7 (4.75m x 3.53m)  
En-suite Shower Room: 8'3 x 4'2 (2.52m x 1.27m)

### FIRST FLOOR

Landing  
Bedroom 1: 13'9 x 13'3 (4.19m x 4.04m)  
Bedroom 2: 14'0 x 12'7 (4.27m x 3.84m)  
Bathroom

### OUTSIDE

Front and Rear Gardens  
Carriage Driveway  
Double Detached Garage





## Main features

- 4 bedroom detached family home
- Generous sitting area and conservatory
- Study, utility room and ground floor cloakroom
- En-suite to ground floor bedroom
- Double detached garage and carriage driveway with ample parking
- Stunning unoverlooked rear garden with large decked area



### Nearest Schools

Primary Schools: South Green Junior School 0.9 miles, Quilters Junior School 1.1 miles, St Peter's Catholic Primary 1.4 miles



### Transport Information

Train Stations: Billericay 1.7 miles, Laindon 2.5 miles, Basildon 3.2 miles



### Address

Broomhills Chase, Little Burstead, Billericay, Essex, CM12



### Directions

For directions to this property please contact us.





Call Billericay Branch 01277 631377 ■ [douglasallen.co.uk](https://douglasallen.co.uk)



- Legal advice should be taken to verify fixtures/fittings, planning, alterations and/or lease details
- Appliances & services are untested, dimensions are approximate and floor plans are not to scale
- Through a Homewise Home For Life Plan people aged 60+ can secure this property for up to 59% less, by purchasing a Lifetime Lease.



50313101/20231106/RP/AA