



**Price**

**£325,000**

**Leasehold**

3x  1x  1x 

**Aldborough Court,  
Aldborough Road North,  
Ilford, Essex, IG2**

**OVER 60?**

Secure this property  
for up to **59% less!**

 **DOUGLAS  
ALLEN**  
Helping you move forwards



## Main features

- Large ground floor maisonette
- Within close proximity to Newbury Park Central Line station
- Well presented throughout
- Well presented communal garden
- Ideal first purchase
- Being sold chain free

## Accommodation

### GROUND FLOOR

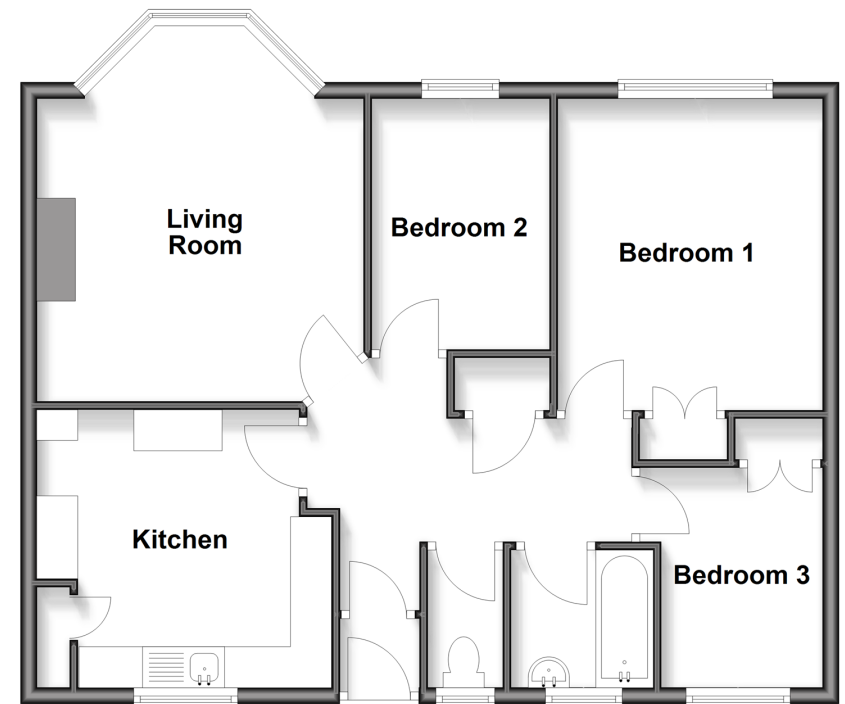
Entrance Hall  
 Living Room : 13'4 x 12'5 (4.07m x 3.79m)  
 Kitchen: 12'3 x 11'4 (3.74m x 3.46m)  
 Bedroom 1 : 14'8 x 9'8 (4.47m x 2.95m)  
 Bedroom 2: 12'7 x 8'6 (3.84m x 2.59m)  
 Bedroom 3 : 10'7 x 7'0 (3.23m x 2.14m)  
 Bathroom  
 Separate Toilet

### OUTSIDE

External Storage Unit  
 Communal Garden

### Ground Floor

Approx. 69.2 sq. metres (744.6 sq. feet)



**Call Barkingside - 020 8551 4025 ■ [douglasallen.co.uk](http://douglasallen.co.uk)**

- A private rental licensing scheme applies to some properties in this area, please contact us before proceeding
- Legal advice should be taken to verify fixtures/fittings, planning, alterations and/or lease details
- Appliances & services are untested, dimensions are approximate and floor plans are not to scale
- Through a Homewise Home For Life Plan people aged 60+ can secure this property for up to 59% less, by purchasing a Lifetime Lease.



52016902/20250802/CN/RUM