



Price
£350,000

Leasehold

3x  1x  1x 

**Mossford Court, Hatfield
Close, Ilford, Essex, IG6**

OVER 60?

Secure this property
for up to **59% less!**

 **DOUGLAS
ALLEN**
Helping you move forwards



Main features

- Large ground floor flat
- No onward chain
- Communal parking & gardens
- Ideally situated within short distance to Barkingside High Street
- Within catchment for Ilford County High School and Avanti Court School

Accommodation

GROUND FLOOR

Entrance Hall

Lounge /Diner: 16'3 x 12'2 (4.96m x 3.71m)

Kitchen/Breakfast Room: 13'5 x 9'2 (4.09m x 2.80m)

Bedroom 1 : 15'4 x 9'4 (4.68m x 2.85m)

Bedroom 2: 12'3 x 8'6 (3.74m x 2.59m)

Bedroom 3: 8'9 x 7'9 (2.67m x 2.36m)

Bathroom

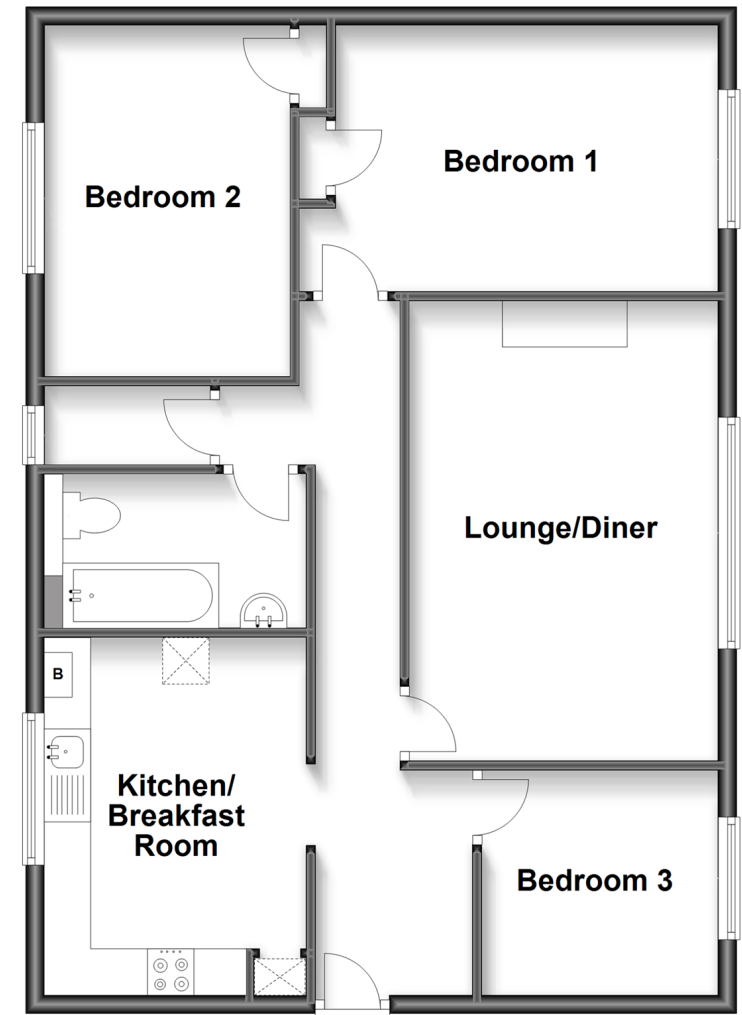
OUTSIDE

Communal Garden

Communal Parking

Ground Floor

Approx. 75.6 sq. metres (813.9 sq. feet)



Call Barkingside - 020 8551 4025 ■ douglasallen.co.uk

- A private rental licensing scheme applies to some properties in this area, please contact us before proceeding
- Legal advice should be taken to verify fixtures/fittings, planning, alterations and/or lease details
- Appliances & services are untested, dimensions are approximate and floor plans are not to scale
- Through a Homewise Home For Life Plan people aged 60+ can secure this property for up to 59% less, by purchasing a Lifetime Lease.

