



OVER 60?

Secure this property
for up to **59% less!**

Price

£600,000

Freehold

3x  1x  2x 

**Greenleafe Drive, Ilford,
Essex, IG6**

 **DOUGLAS
ALLEN**
Helping you move forwards



Main features

- 3 bedroom end of terrace house
- Extended to the rear
- Sought after Clayhall location
- Close to High Street as well as popular local schools
- Short distance to Barkingside Central Line Station

Accommodation

GROUND FLOOR

- Entrance Porch
- Hallway
- Lounge: 16'4 x 13'4 (4.98m x 4.07m)
- Dining Area: 13'3 x 11'7 (4.04m x 3.53m)
- Family Room: 14'9 x 8'6 (4.50m x 2.59m)
- Kitchen: 11'0 x 7'9 (3.36m x 2.36m)
- Utility Area
- Cloakroom

FIRST FLOOR

- Landing
- Bedroom 1: 13'1 x 9'1 (3.99m x 2.77m)
- Bedroom 2: 12'0 x 9'10 (3.66m x 3.00m)
- Bedroom 3: 8'8 x 7'3 (2.64m x 2.21m)
- Bathroom

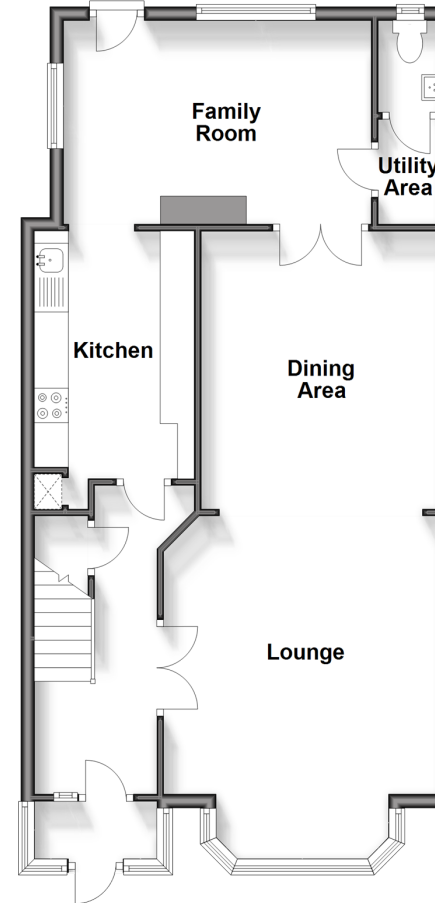
OUTSIDE

- Rear Garden
- Off Street Parking
- Garage

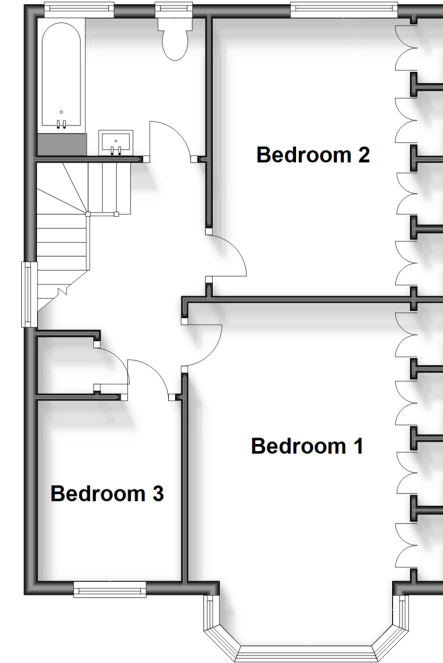
Call Barkingside - 020 8551 4025 ■ douglasallen.co.uk

- A private rental licensing scheme applies to some properties in this area, please contact us before proceeding
- Legal advice should be taken to verify fixtures/fittings, planning, alterations and/or lease details
- Appliances & services are untested, dimensions are approximate and floor plans are not to scale
- Through a Homewise Home For Life Plan people aged 60+ can secure this property for up to 59% less, by purchasing a Lifetime Lease.

Ground Floor
Approx. 69.8 sq. metres (751.7 sq. feet)



First Floor
Approx. 51.2 sq. metres (550.9 sq. feet)



50213432/20240709/AMA/MS