



Price
£600,000

Freehold

3x  1x  2x 

**Cheriton Avenue, Ilford,
Essex, IG5**

OVER 60?

Secure this property
for up to **59% less!**

 **DOUGLAS
ALLEN**
Helping you move forwards



Main features

- 3 bedroom semi detached home
- Scope to extend into the loft(STPP)
- Powered outbuilding
- Extended kitchen with downstairs cloakroom
- In the catchment area of Beal High School and Ilford County High School

Accommodation

GROUND FLOOR

- Entrance Porch
- Hallway
- Lounge: 13'0 x 12'0 (3.97m x 3.66m)
- Dining Area: 10'6 x 9'5 (3.20m x 2.87m)
- Kitchen/Breakfast Area: 16'6 x 11'8 (5.03m x 3.56m)
- Cloakroom

FIRST FLOOR

- Landing
- Bedroom 1: 13'4 x 10'6 (4.07m x 3.20m)
- Bedroom 2: 10'7 x 10'6 (3.23m x 3.20m)
- Bedroom 3: 8'7 x 6'8 (2.62m x 2.03m)
- Bath/Shower Room

OUTBUILDING

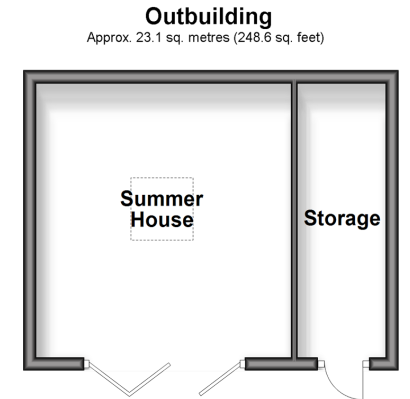
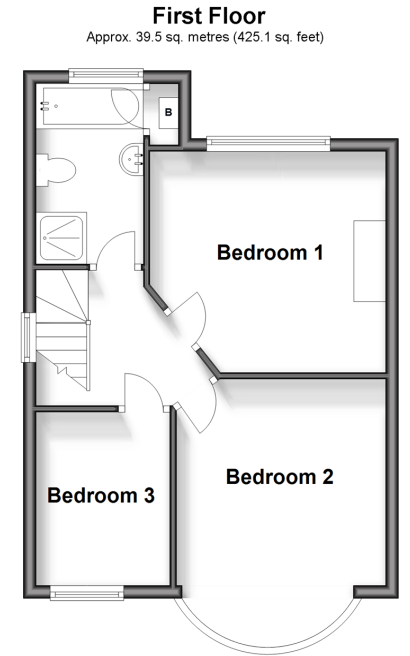
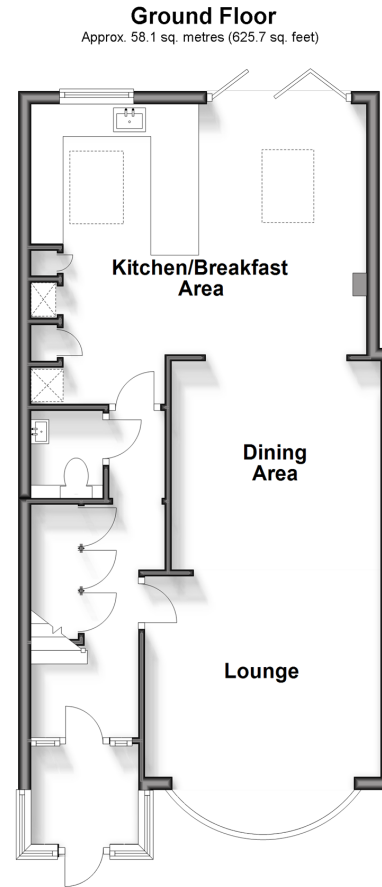
- Summer House

OUTSIDE

- Off Street Parking
- Rear Garden

Call Barkingside - 020 8551 4025 ■ douglasallen.co.uk

- A private rental licensing scheme applies to some properties in this area, please contact us before proceeding
- Legal advice should be taken to verify fixtures/fittings, planning, alterations and/or lease details
- Appliances & services are untested, dimensions are approximate and floor plans are not to scale
- Through a Homewise Home For Life Plan people aged 60+ can secure this property for up to 59% less, by purchasing a Lifetime Lease.



50212755/20240613/LA/RUM