



Price

£325,000

Leasehold

2x  1x  1x 

**William Court, Crown
Road, Ilford, Essex, IG6**



Main features

- Well presented 2 bedroom maisonette
- First floor
- Residents parking
- Close to shops and popular schools
- Barkingside Central Line Train Station just a short walk away

Accommodation

FIRST FLOOR

Entrance Hall

Lounge/Dining Room : 13'5 x 11'3 (4.09m x 3.43m)

Kitchen: 13'2 x 7'6 (4.02m x 2.29m)

Bedroom 1: 12'9 x 11'0 (3.89m x 3.36m)

Bedroom 2: 11'5 x 8'9 (3.48m x 2.67m)

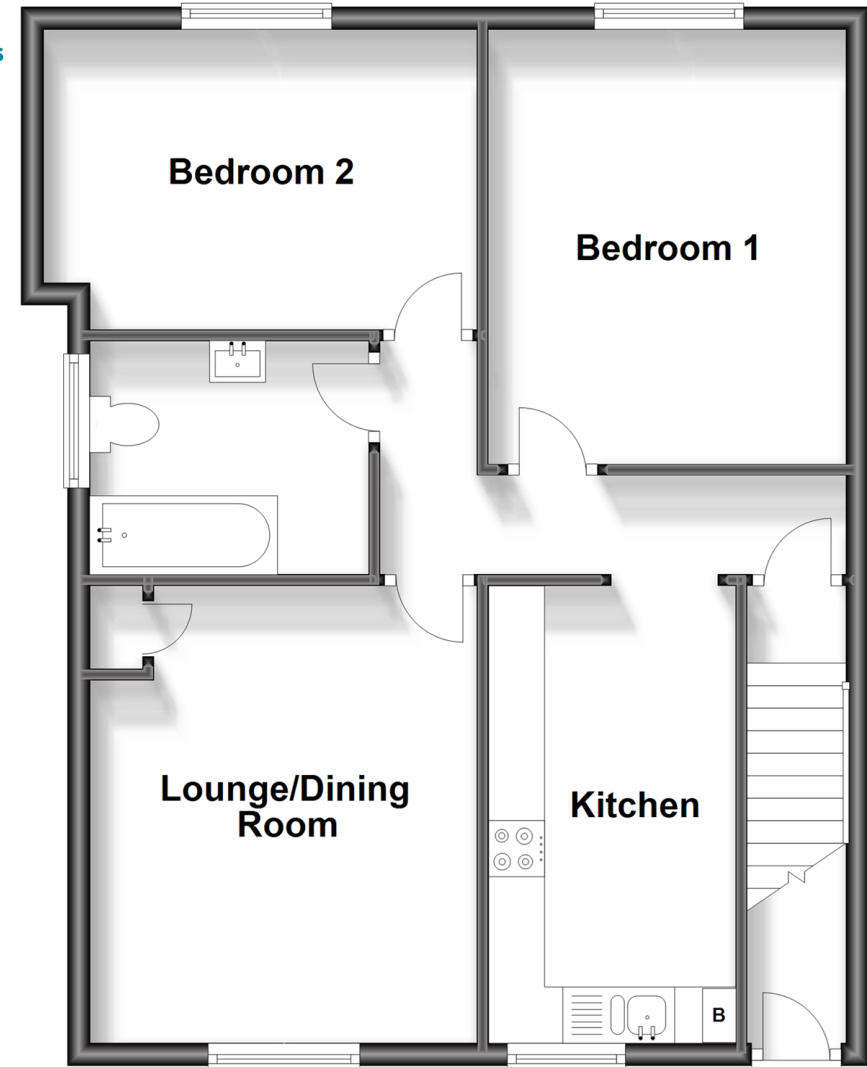
Bathroom

OUTSIDE

Communal Gardens

First Floor

Approx. 61.9 sq. metres (665.9 sq. feet)



Call Barkingside - 020 8551 4025 ■ douglasallen.co.uk

- A private rental licensing scheme applies to some properties in this area, please contact us before proceeding
- Legal advice should be taken to verify fixtures/fittings, planning, alterations and/or lease details
- Appliances & services are untested, dimensions are approximate and floor plans are not to scale



50215638/20240504/LA/MS