



Price
£700,000

Freehold

4x  2x  2x 

**Woodford Avenue,
Redbridge, Essex, IG4**

OVER 60?

Secure this property
for up to **59% less!**

 **DOUGLAS
ALLEN**
Helping you move forwards



Main features

- Double fronted
- Ground and first floor shower rooms
- Double garage to the rear
- Within popular Beal High School catchment area
- Within 1 mile of Redbridge Central Line Station

Accommodation

GROUND FLOOR

Entrance Hall

Lounge: 13'2 x 10'2 (4.02m x 3.10m)

Family Area: 10'2 x 7'5 (3.10m x 2.26m)

Kitchen/Breakfast Area: (L-shaped) 25'8 x 10'0 (7.83m x 3.05m) plus 20'6 x 9'6 (6.25m x 2.90m)

Dining Room: 19'1 x 10'4 (5.82m x 3.15m)

Shower Room

FIRST FLOOR

Landing

Bedroom 1: 16'1 x 13'2 (4.91m x 4.02m)

Bedroom 2: 16'7 x 10'3 (5.06m x 3.13m)

Bedroom 3: 12'0 x 10'7 (3.66m x 3.23m)

Bedroom 4: 9'7 x 8'1 (2.92m x 2.47m)

Bathroom

OUTSIDE

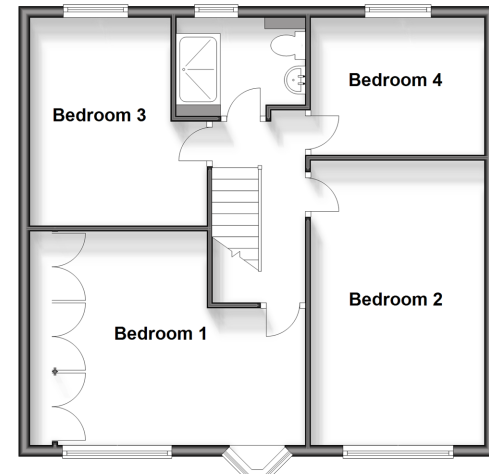
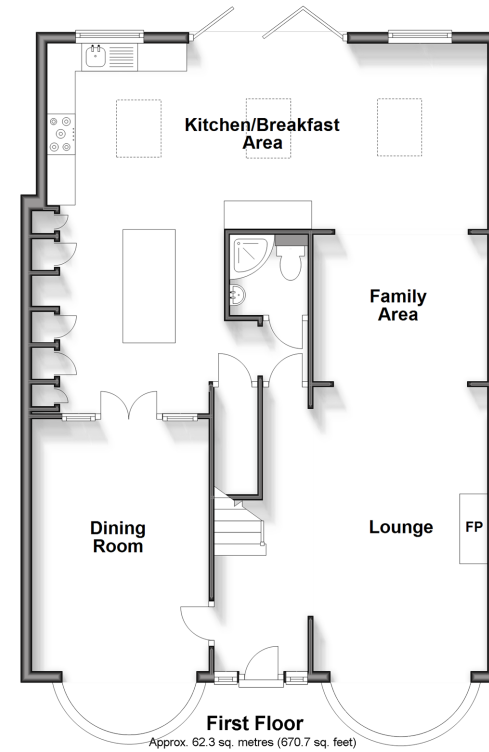
Front and Rear Garden

Garage

Call Barkingside - 020 8551 4025 ■ douglasallen.co.uk

- A private rental licensing scheme applies to some properties in this area, please contact us before proceeding
- Legal advice should be taken to verify fixtures/fittings, planning, alterations and/or lease details
- Appliances & services are untested, dimensions are approximate and floor plans are not to scale
- Through a Homewise Home For Life Plan people aged 60+ can secure this property for up to 59% less, by purchasing a Lifetime Lease.

Ground Floor
Approx. 92.1 sq. metres (991.7 sq. feet)



50215445/20240301/AMA/MS