



Price
£525,000

Freehold

3x  1x  1x 

**Mullards Close, Mitcham,
Surrey, CR4**

OVER 60?

Secure this property
for up to **59% less!**

cubitt&west
Helping you move forwards



Main features

- End-of-terrace house with garage and driveway
- Large pretty rear garden with outdoor seating area
- Generous sized bedrooms
- Plenty of storage throughout
- Downstairs cloakroom
- Excellent condition

Accommodation

GROUND FLOOR

Entrance Hall

Living Room: 13'9 x 12'6 (4.19m x 3.81m)

Kitchen/Diner: 15'8 x 11'5 (4.78m x 3.48m)

Cloakroom

FIRST FLOOR

Landing

Bedroom 1: 13'6 x 9'3 (4.12m x 2.82m)

Bedroom 2: 10'6 x 9'4 (3.20m x 2.85m)

Bedroom 3: 10'4 x 6'5 (3.15m x 1.96m)

Bathroom

OUTSIDE

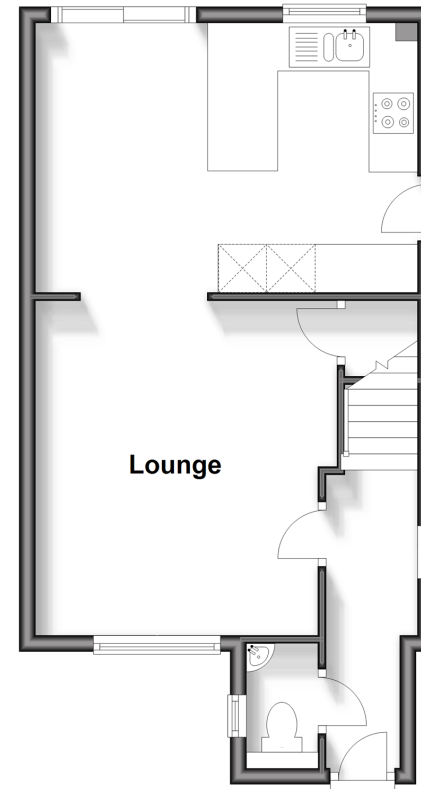
Driveway

Garage

Rear Garden

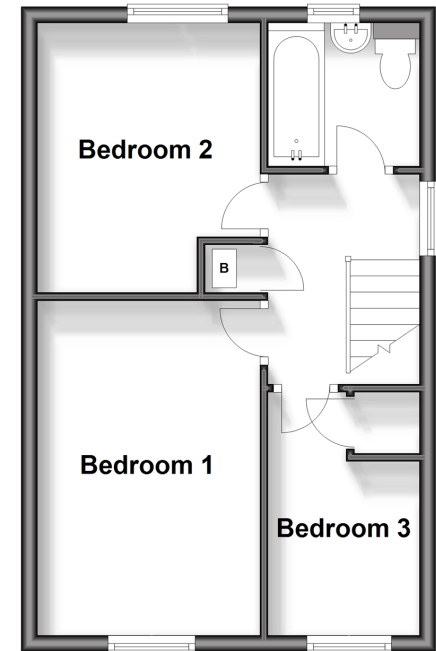
Ground Floor

Approx. 39.3 sq. metres (423.0 sq. feet)



First Floor

Approx. 36.2 sq. metres (389.2 sq. feet)



Call Wallington - 020 8647 0011 ■ cubittandwest.co.uk

- If buying to let, the energy rating will need to be improved to at least 'E' rating before you can let the property
- Legal advice should be taken to verify fixtures/fittings, planning, alterations and/or lease details
- Appliances & services are untested, dimensions are approximate and floor plans are not to scale
- Through a Homewise Home For Life Plan people aged 60+ can secure this property for up to 59% less, by purchasing a Lifetime Lease.



22117740/20250113/GG/HF