



OVER 60?

Secure this property
for up to **59% less!**

Price

£290,000

Leasehold

2x  1x  1x 

**High Street, Carshalton,
Surrey, SM5**

cubitt&west
Helping you move forwards



Main features

- **Grade II listed ground floor maisonette**
- **Situated in the heart of Carshalton Village**
- **Offering a perfect blend of character and contemporary features**
- **Open-plan lounge/kitchen**
- **Ideal for first-time purchase or investment**

Accommodation

GROUND FLOOR

Entrance Hall

Lounge: 14'2 maximum, into bay x 14'0 (4.32m x 4.27m)

Kitchen: 10'8 x 7'6 (3.25m x 2.29m)

Bedroom 1: 16'2 x 9'0 (4.93m x 2.75m)

Bedroom 2: 10'1 x 8'10 maximum (3.08m x 2.69m)

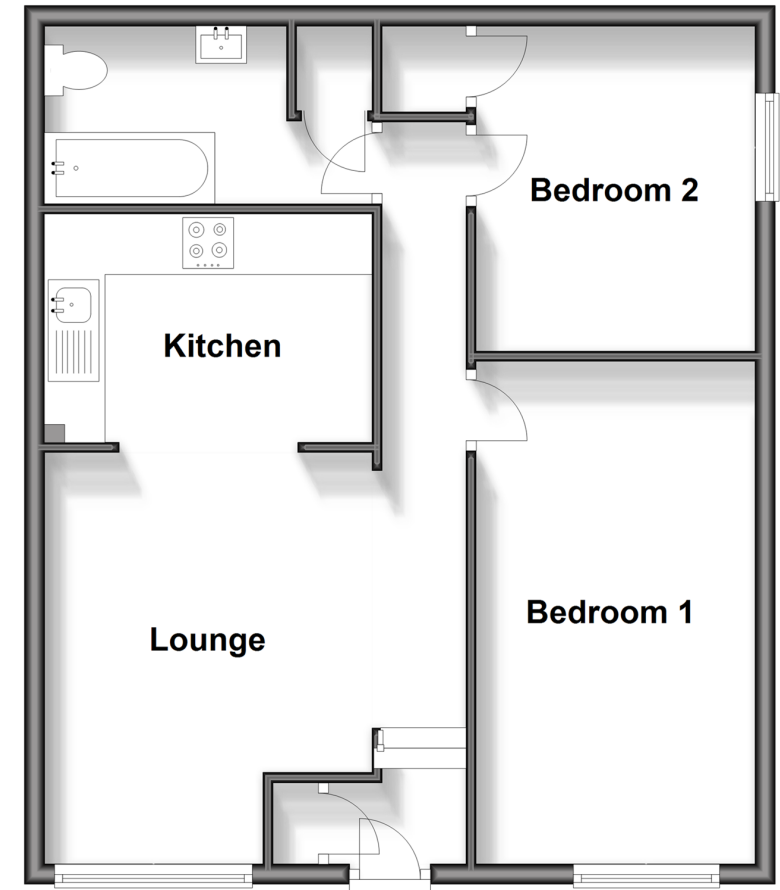
Bathroom

OUTSIDE

Allocated Parking Space

Ground Floor

Approx. 56.9 sq. metres (612.1 sq. feet)



Call Wallington - 020 8647 0011 ■ cubittandwest.co.uk

- Legal advice should be taken to verify fixtures/fittings, planning, alterations and/or lease details
- Appliances & services are untested, dimensions are approximate and floor plans are not to scale
- Through a Homewise Home For Life Plan people aged 60+ can secure this property for up to 59% less, by purchasing a Lifetime Lease.

