



Guide Price
£415,000

Leasehold

3x  1x  1x 

**Manor Road, Wallington,
Surrey, SM6**

OVER 60?

Secure this property
for up to **59% less!**

cubitt & west
Helping you move forwards



Main features

- Stunning ground floor apartment which is chain free and ready to move into!
- Private patio area
- New build warranty in place
- Fantastic location - walking distance to train station and local amenities
- Excellent condition throughout
- Share of freehold on completion

Accommodation

GROUND FLOOR

Entrance Hall

Lounge/Kitchen/Diner: 21'9 x 11'4
(6.63m x 3.46m)

Bedroom 1: 10'9 x 10'8 (3.28m x 3.25m)

Bedroom 2: 15'2 x 11'2 (4.63m x 3.41m)

Bedroom 3: 11'1 x 10'2 (3.38m x 3.10m)

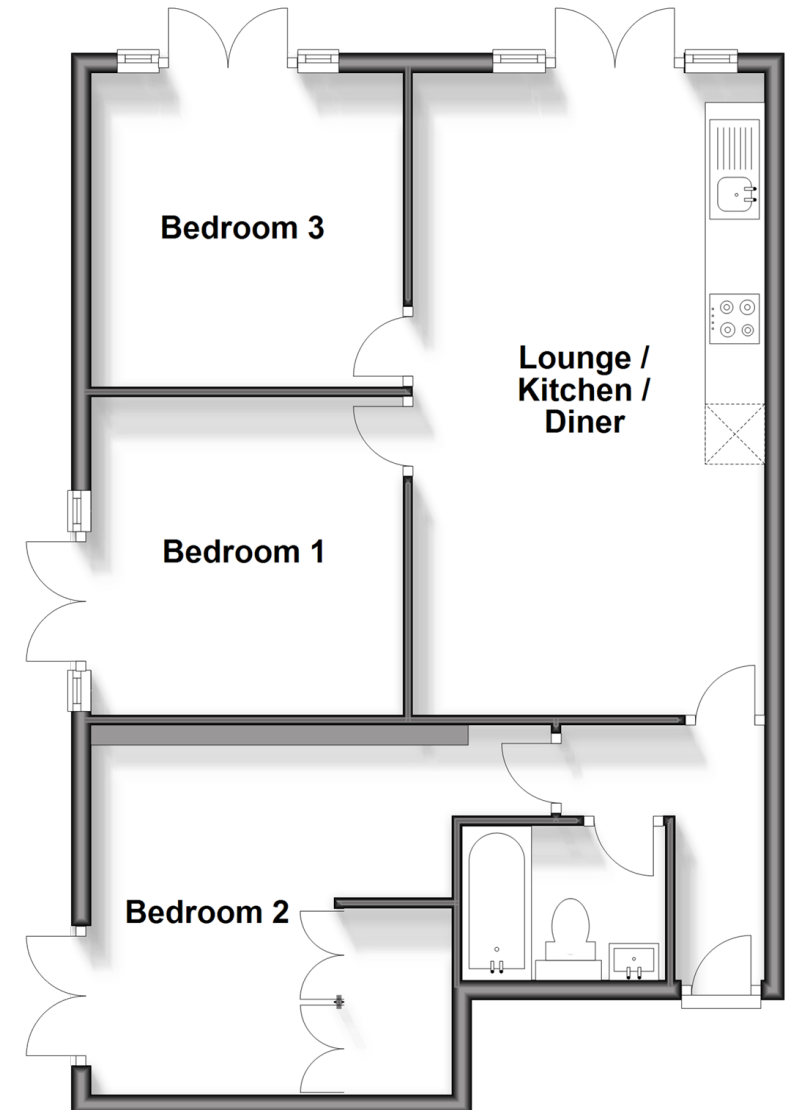
Bathroom

OUTSIDE

Patio Area

Ground Floor

Approx. 66.2 sq. metres (712.2 sq. feet)



Call Wallington - 020 8647 0011 ■ cubittandwest.co.uk

- Legal advice should be taken to verify fixtures/fittings, planning, alterations and/or lease details
- Appliances & services are untested, dimensions are approximate and floor plans are not to scale
- Through a Homewise Home For Life Plan people aged 60+ can secure this property for up to 59% less, by purchasing a Lifetime Lease.



22117742/20250118/DK/HF