



Price

£315,000

Leasehold

2x  1x  1x 

Park Court, Haselmere  
Close, Wallington,  
Surrey, SM6

**OVER 60?**

Secure this property  
for up to **59% less!**

**cubitt & west**  
Helping you move forwards



## Main features

- **Maisonette situated in a cul-de-sac**
- **Spacious accommodation throughout**
- **Private rear garden**
- **Close to Mellows Park, within easy reach of Wallington High Street**
- **Good transport links from Wallington station, local buses and close to amenities**

## Accommodation

### FIRST FLOOR

#### Entrance Hall

Living Room: 15'5 maximum x 12'11 maximum (4.70m x 3.94m)

Kitchen: 13'2 x 7'2 (4.02m x 2.19m)

Bedroom 1: 13'4 x 11'1 (4.07m x 3.38m)

Bedroom 2: 9'7 x 9'5 up to fitted wardrobes (2.92m x 2.87m)

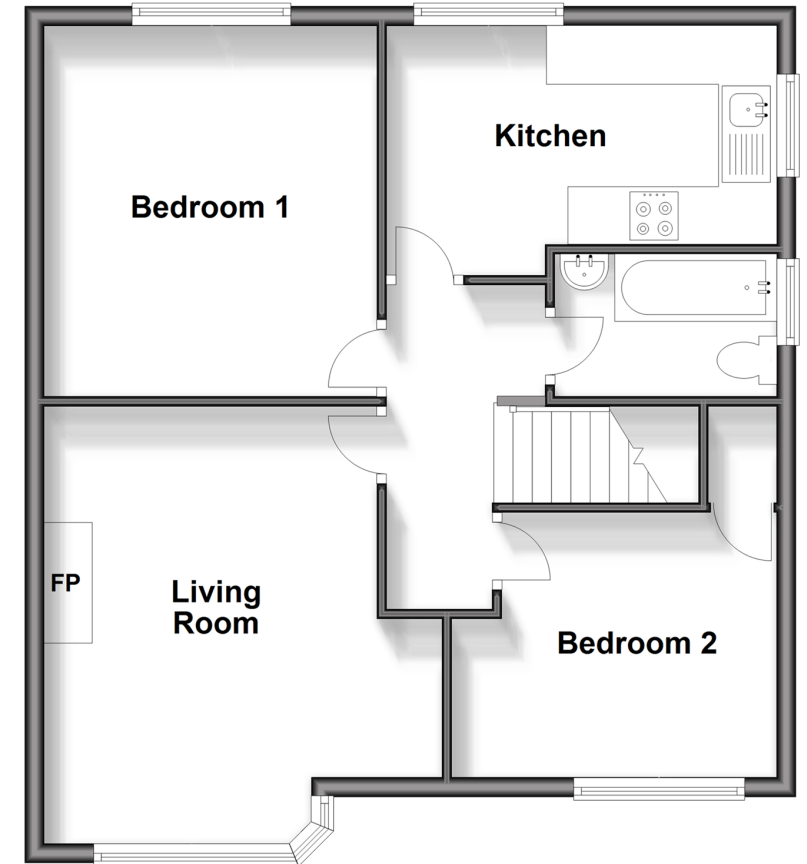
#### Bathroom

### OUTSIDE

#### Driveway

## First Floor

Approx. 61.1 sq. metres (658.2 sq. feet)



**Call Wallington - 020 8647 0011 ■ [cubittandwest.co.uk](http://cubittandwest.co.uk)**

- A private rental licensing scheme applies to some properties in this area, please contact us before proceeding
- Legal advice should be taken to verify fixtures/fittings, planning, alterations and/or lease details
- Appliances & services are untested, dimensions are approximate and floor plans are not to scale
- Through a Homewise Home For Life Plan people aged 60+ can secure this property for up to 59% less, by purchasing a Lifetime Lease.



22117447/20240916/NF1/NL