



**Price**

**£315,000**

**Leasehold**

2x  1x  1x 

**Park Court, Haselmere  
Close, Wallington,  
Surrey, SM6**

**OVER 60?**

Secure this property  
for up to **59% less!**

**cubitt & west**  
Helping you move forwards



## Main features

- Ground floor maisonette situated in a cul-de-sac
- Offering spacious accommodation
- Well connected via Wallington mainline train station and local bus routes
- Short walk to Wallington High Street
- In the catchment area for excellent secondary schools

## Accommodation

### GROUND FLOOR

#### Entrance Hall

Living Room: 15'5 into bay x 11'5 (4.70m x 3.48m)

Kitchen: 13'4 x 8'5 (4.07m x 2.57m)

Bedroom 1: 12'10 x 11'10 (3.91m x 3.61m)

Bedroom 2: 9'11 x 9'7 (3.02m x 2.92m)

Bathroom

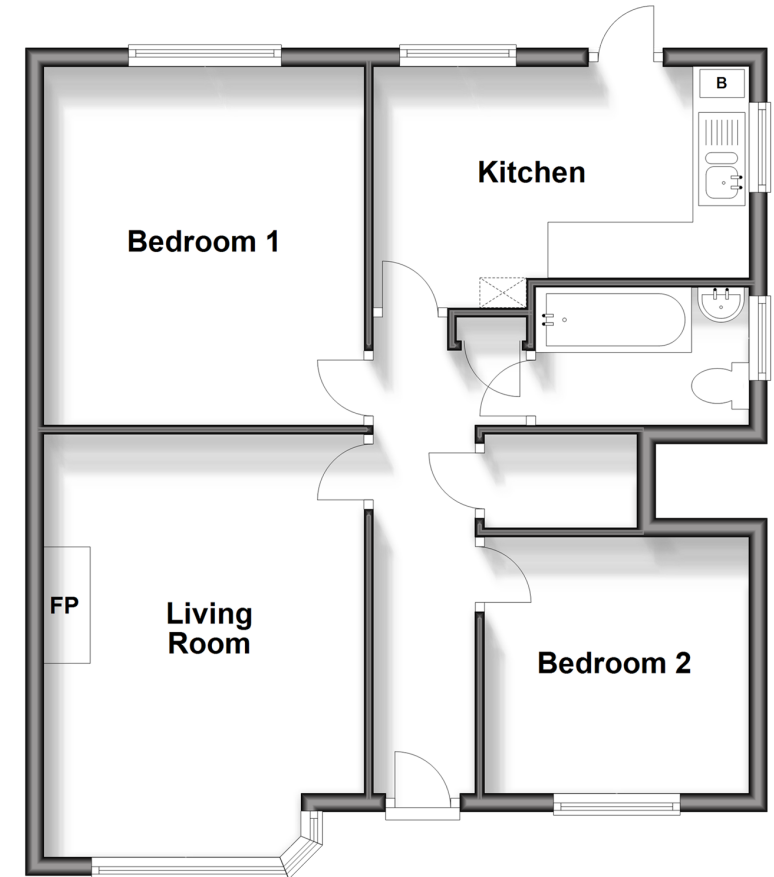
### OUTSIDE

Front Garden

Rear Garden

## Ground Floor

Approx. 59.9 sq. metres (644.3 sq. feet)



Call Wallington - 020 8647 0011 ■ [cubittandwest.co.uk](http://cubittandwest.co.uk)

- A private rental licensing scheme applies to some properties in this area, please contact us before proceeding
- Legal advice should be taken to verify fixtures/fittings, planning, alterations and/or lease details
- Appliances & services are untested, dimensions are approximate and floor plans are not to scale
- Through a Homewise Home For Life Plan people aged 60+ can secure this property for up to 59% less, by purchasing a Lifetime Lease.



22117381/20240909/GG/DK