



Guide Price
£475,000

Freehold

3x  2x  1x 

**Heron Way, Wallington,
Surrey, SM6**

OVER 60?

Secure this property
for up to **59% less!**

cubitt & west
Helping you move forwards



Main features

- Chain-free!
- Stunning mid-terrace town house
- Well-presented throughout
- Spacious integral garage and driveway
- Bathroom, en-suite shower room and separate toilet
- Set in a peaceful and popular location close to schools and transport links

Accommodation

GROUND FLOOR

Entrance Hall
 Bedroom 3: 14'8 x 7'4 (4.47m x 2.24m)
 Bathroom

FIRST FLOOR

Landing
 Lounge: 14'7 x 11'8 (4.45m x 3.56m)
 Balcony
 Kitchen/Diner: 14'5 x 12'1 (4.40m x 3.69m)
 Separate Toilet

SECOND FLOOR

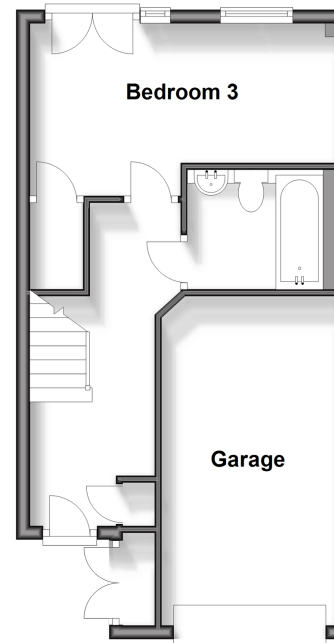
Landing
 Bedroom 1: 14'7 x 10'2 (4.45m x 3.10m)
 En-Suite Shower Room
 Bedroom 2: 14'7 x 9'2 (4.45m x 2.80m)

OUTSIDE

Driveway
 Integral Garage
 Rear Garden

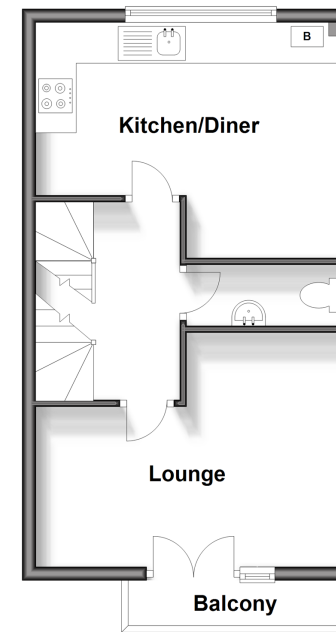
Ground Floor

Approx. 38.2 sq. metres (411.4 sq. feet)



First Floor

Approx. 36.4 sq. metres (391.4 sq. feet)



Second Floor

Approx. 36.3 sq. metres (391.0 sq. feet)



Call Wallington - 020 8647 0011 ■ cubittandwest.co.uk

- A private rental licensing scheme applies to some properties in this area, please contact us before proceeding
- Appliances & services are untested, dimensions are approximate and floor plans are not to scale

- Legal advice should be taken to verify fixtures/fittings, planning, alterations and/or lease details
- Through a Homewise Home For Life Plan people aged 60+ can secure this property for up to 59% less, by purchasing a Lifetime Lease.



22117630/20240828/HF/HF