



Price
£325,000

Leasehold

2x  1x  1x 

**The Albany, Woodcote
Road, Wallington,
Surrey, SM6**

OVER 60?

Secure this property
for up to **59% less!**

cubitt & west
Helping you move forwards



Main features

- Superb recently renovated first floor apartment
- Garage en-bloc
- Conveniently located close to amenities, transport links and Wallington High Street
- Large lounge/diner with direct access to a private balcony
- Spacious open-plan kitchen with plenty of natural light throughout

Accommodation

FIRST FLOOR

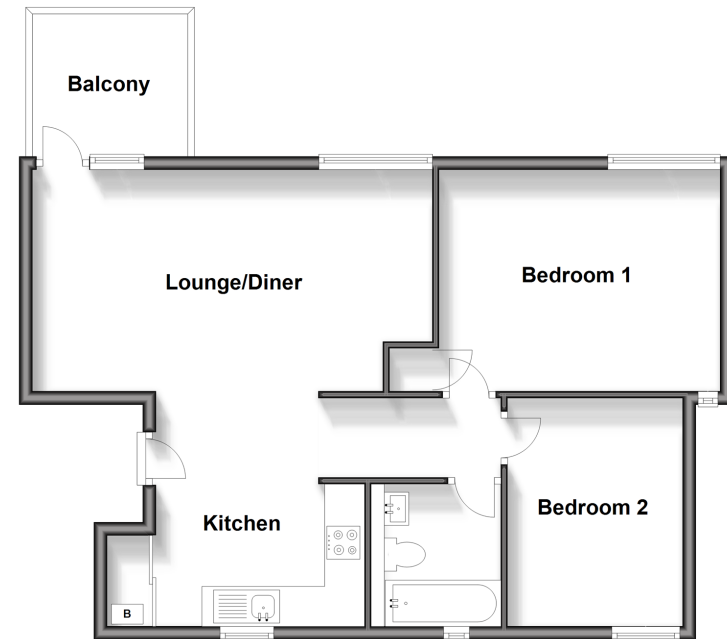
- Entrance Hall
- Lounge/Diner: 19'6 x 10'9 (5.95m x 3.28m)
- Balcony
- Kitchen: 11'6 x 7'1 (3.51m x 2.16m)
- Bedroom 1: 12'3 x 11'1 (3.74m x 3.38m)
- Bedroom 2: 10'9 x 8'4 (3.28m x 2.54m)
- Bathroom: 12'7 x 4'9 (3.84m x 1.45m)

OUTSIDE

- Communal Gardens
- Garage En-Bloc

First Floor

Approx. 64.1 sq. metres (690.3 sq. feet)



Call Wallington - 020 8647 0011 ■ cubittandwest.co.uk

- A private rental licensing scheme applies to some properties in this area, please contact us before proceeding
- Appliances & services are untested, dimensions are approximate and floor plans are not to scale

- Legal advice should be taken to verify fixtures/fittings, planning, alterations and/or lease details
- Through a Homewise Home For Life Plan people aged 60+ can secure this property for up to 59% less, by purchasing a Lifetime Lease.



22117606/20240723/GG/HF