



Price
£500,000

Freehold

2x  1x  1x 

**Hanno Close,
Wallington, Surrey, SM6**

OVER 60?

Secure this property
for up to **59% less!**

cubitt & west
Helping you move forwards



Main features

- Well-maintained mid-terrace house with a modern finish
- Ample storage space
- Close to outstanding schools
- Loft room is perfect for a home office or playroom
- Located within easy reach of Wallington town centre, station and local amenities

Accommodation

GROUND FLOOR

Entrance Hall

Lounge/Kitchen: 33'2 x 14'1 (10.12m x 4.30m)

FIRST FLOOR

Landing

Bedroom 1: 13'6 x 12'2 (4.12m x 3.71m)

Balcony/Terrace

Bedroom 2: 14'1 x 7'9 into eaves (4.30m x 2.36m)

Shower Room

SECOND FLOOR

Loft Room: 14'2 x 6'1 (4.32m x 1.86m)

OUTSIDE

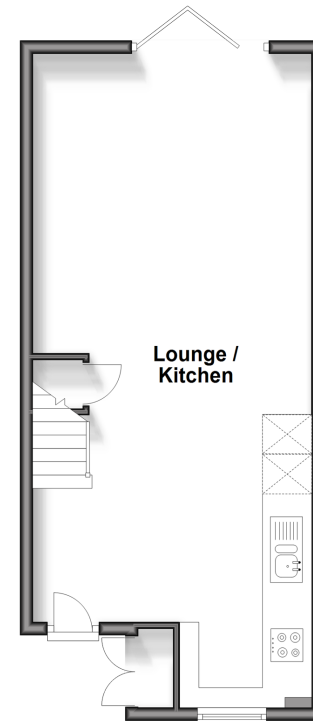
Driveway

Rear Garden

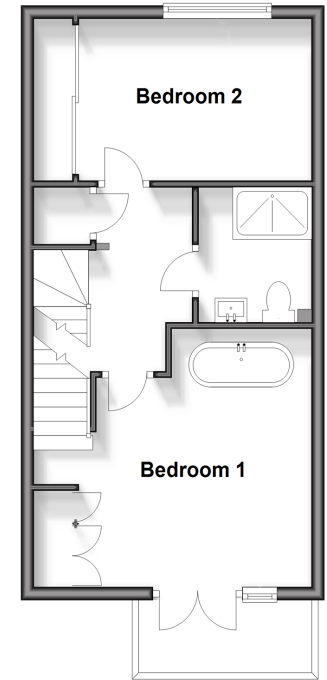
Call Wallington - 020 8647 0011 ■ cubittandwest.co.uk

- A private rental licensing scheme applies to some properties in this area, please contact us before proceeding
- Legal advice should be taken to verify fixtures/fittings, planning, alterations and/or lease details
- Appliances & services are untested, dimensions are approximate and floor plans are not to scale
- Through a Homewise Home For Life Plan people aged 60+ can secure this property for up to 59% less, by purchasing a Lifetime Lease.

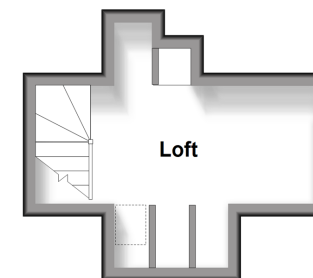
Ground Floor
Approx. 41.1 sq. metres (442.9 sq. feet)



First Floor
Approx. 37.6 sq. metres (405.0 sq. feet)



Second Floor
Approx. 10.4 sq. metres (112.2 sq. feet)



22117439/20240316/GG/LB