



Guide Price
£600,000

Freehold

3x  2x  1x 

**Riverbank Way,
Wallington, Surrey, SM6**

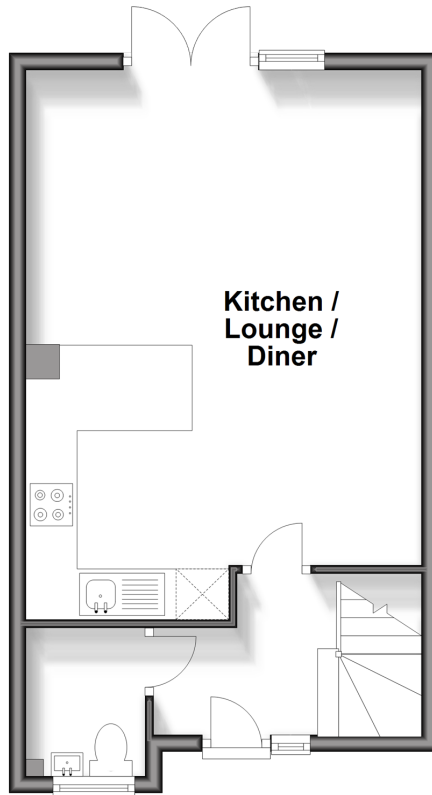
OVER 60?

Secure this property
for up to **59% less!**

cubitt & west
Helping you move forwards

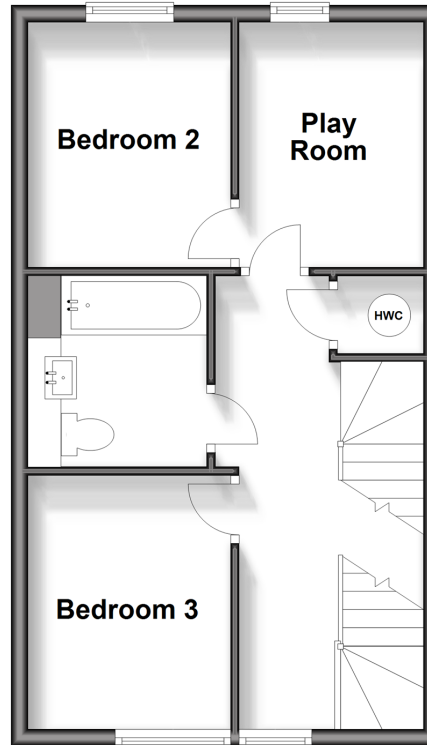
Ground Floor

Approx. 37.2 sq. metres (400.3 sq. feet)



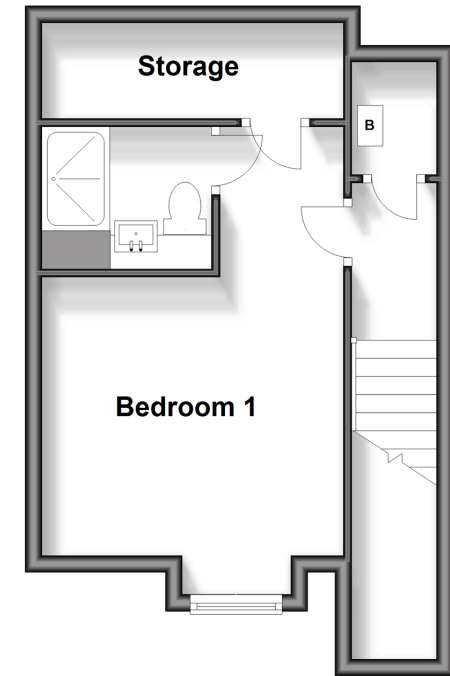
First Floor

Approx. 38.8 sq. metres (417.7 sq. feet)



Second Floor

Approx. 26.1 sq. metres (281.1 sq. feet)



Accommodation

GROUND FLOOR

Entrance Hall : 7'5 x 7'2 (2.26m x 2.19m)

Cloakroom

Kitchen/Lounge/Diner : 21'5 x 15'4 (6.53m x 4.68m)

FIRST FLOOR

Landing

Play Room: 10'0 x 7'5 (3.05m x 2.26m)

Bedroom 2: 10'0 x 7'3 (3.05m x 2.21m)

Bedroom 3: 9'7 x 8'0 (2.92m x 2.44m)

Bathroom: 7'2 x 6'9 (2.19m x 2.06m)

SECOND FLOOR

Landing

Bedroom 1: 17'11 maximum x 11'7 (5.46m x 3.53m)

En-suite Shower Room: 7'1 x 5'4 (2.16m x 1.63m)

OUTSIDE

Rear Garden

Residents Permit Parking



Main features

- Modern and spacious town house with views overlooking the River Wandle
- Arranged over 3 floors
- Bedroom 1 with en-suite shower room
- Located moments away from popular schools, local high street and Hackbridge train station
- Low maintenance rear garden and permit parking



Nearest Schools

Primary Schools: Hackbridge Primary 0.1 miles, Culvers House Primary 0.2 miles, Muschamp Primary 0.5 miles
 Secondary Schools: Wandle Valley School 0.5 miles, Carshalton Boys Sports College 0.6 miles, Carshalton High School for Girls 0.7 miles



Transport Information

Train Stations: Hackbridge 0.2 miles, Carshalton 0.6 miles, Mitcham Junction 1.0 miles



Address

Riverbank Way, Wallington, Surrey, SM6



Directions

For directions to this property please contact us.



cubitt&west
Helping you move forwards

Call Wallington Branch 020 8647 0011 ■ [cubittandwest.co.uk](https://www.cubittandwest.co.uk)



- A private rental licensing scheme applies to some properties in this area, please contact us before proceeding
- Appliances & services are untested, dimensions are approximate and floor plans are not to scale

- Legal advice should be taken to verify fixtures/fittings, planning, alterations and/or lease details
- Through a Homewise Home For Life Plan people aged 60+ can secure this property for up to 59% less, by purchasing a Lifetime Lease.



22117357/20240316/GG/DK