



Guide Price
£600,000

Freehold

4x  2x  2x 

**Croydon Road,
Beddington, Croydon,
Surrey, CR0**

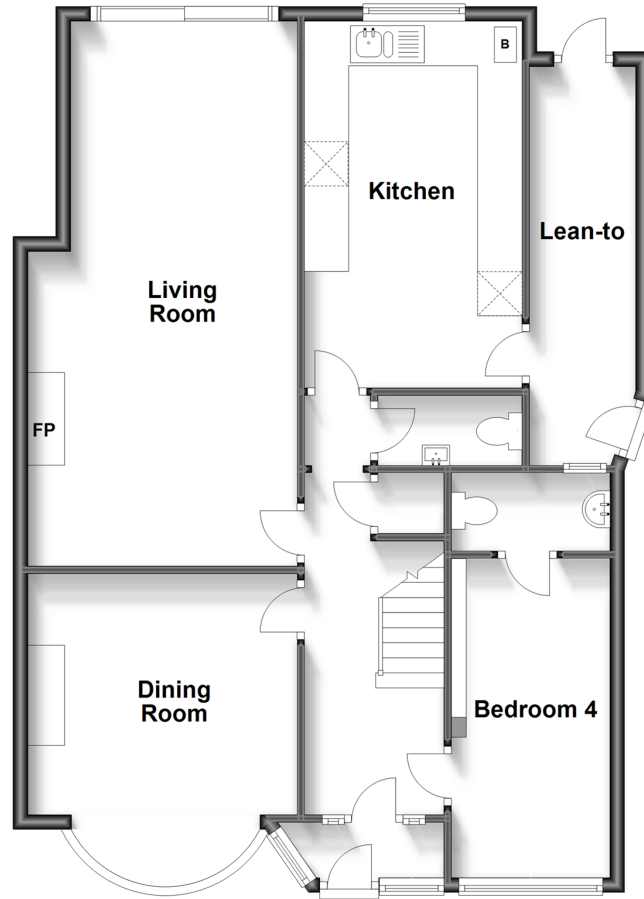
OVER 60?

Secure this property
for up to **59% less!**

cubitt & west
Helping you move forwards

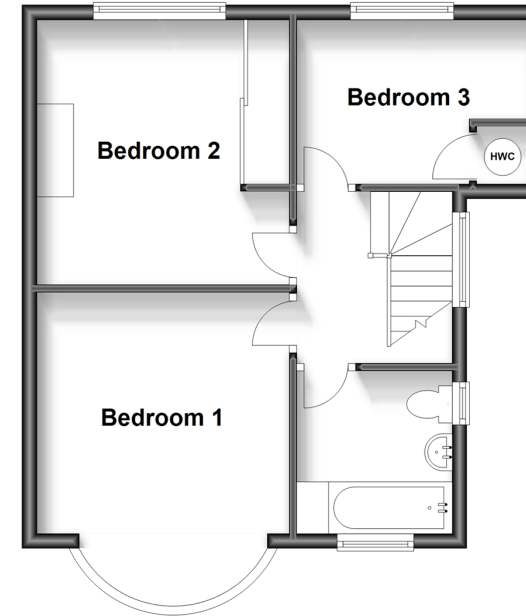
Ground Floor

Approx. 87.8 sq. metres (945.5 sq. feet)



First Floor

Approx. 42.0 sq. metres (451.8 sq. feet)



Accommodation

GROUND FLOOR

Porch

Entrance Hall: 15'6 x 5'7 (4.73m x 1.70m)

Living Room: 24'2 x 12'1 (7.37m x 3.69m)

Dining Room: 13'7 into bay x 11'8 (4.14m x 3.56m)

Kitchen: 16'4 x 10'3 (4.98m x 3.13m)

Lean to: 17'8 x 5'5 (5.39m x 1.65m)

Cloakroom

Bedroom 4: 14'3 x 6'8 (4.35m x 2.03m)

En suite

FIRST FLOOR

Bedroom 1: 14'6 into bay x 11'9 (4.42m x 3.58m)

Bedroom 2: 11'6 x 11'5 (3.51m x 3.48m)

Bedroom 3: 10'2 x 7'9 (3.10m x 2.36m)

Bathroom: 7'2 x 6'2 (2.19m x 1.88m)

OUTSIDE

Rear Garden
Driveway



Main features

- 1930's Semi detached house situated in a popular location within easy reach of local shops, schools, public transport and parks
- Offering spacious accommodation throughout
- Vendor suited
- Impressive extended and converted family house with further potential to extend (Subject to planning permission)
- Driveway and large rear garden

Nearest Schools

Primary Schools: High View Primary 0.3 miles, Beddington Park Primary 0.4 miles, Foresters Primary 0.7 miles
Secondary Schools: Link Secondary School 0.1 miles, Sherwood Park School 0.4 miles, Carew Manor School 0.5 miles

Transport Information

Train Stations: Waddon 0.7 miles, Wallington 1.0 miles, Hackbridge 1.3 miles

Address

Croydon Road, Beddington, Croydon, Surrey, CR0

Directions

For directions to this property please contact us.



cubitt&west
Helping you move forwards

Call Wallington Branch 020 8647 0011 ■ [cubittandwest.co.uk](https://www.cubittandwest.co.uk)



- A private rental licensing scheme applies to some properties in this area, please contact us before proceeding
- Appliances & services are untested, dimensions are approximate and floor plans are not to scale

- Legal advice should be taken to verify fixtures/fittings, planning, alterations and/or lease details
- Through a Homewise Home For Life Plan people aged 60+ can secure this property for up to 59% less, by purchasing a Lifetime Lease.



22117206/20240325/DK/DK