

**OVER 60?**

Secure this property  
for up to **59% less!**



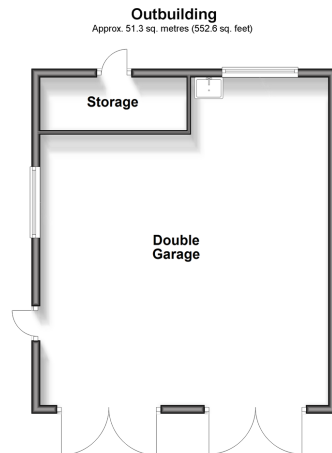
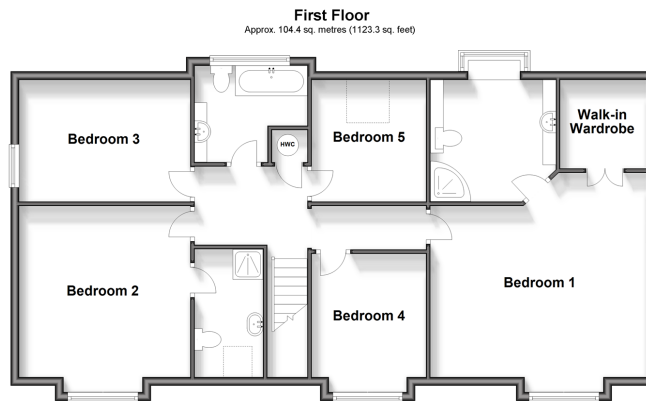
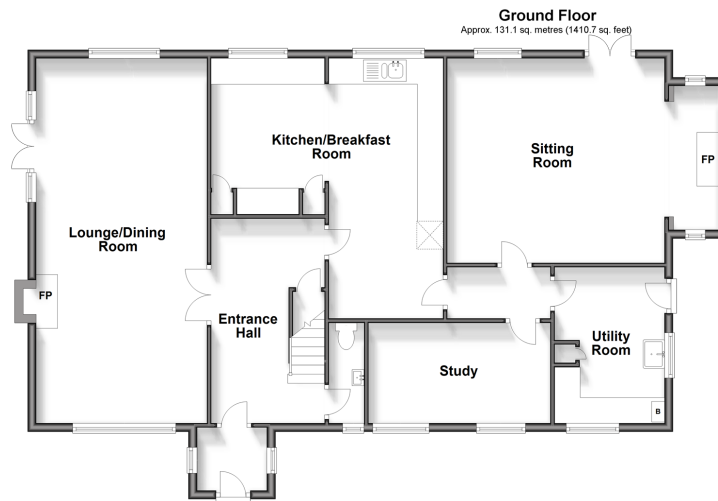
**Guide Price**  
**£900,000**  
**Freehold**

5x  3x  3x 

Ringles Cross, Uckfield, East Sussex, TN22

**cubitt&west**  
Helping you move forwards





## Accommodation

### GROUND FLOOR

Porch

Entrance Hall

Cloakroom

Lounge/Dining Room: 28'2 x 13'2 (8.59m x 4.02m)

Kitchen Area: 20'0 x 8'8 (6.10m x 2.64m)

Breakfast Area: 17'11 x 11'10 (5.46m x 3.61m)

Inner Hall

Study: 13'11 x 7'9 (4.24m x 2.36m)

Sitting Room: 16'8 x 15'9 (5.08m x 4.80m)

Utility Room: 11'10 x 8'5 (3.61m x 2.57m)

### FIRST FLOOR

Landing

Bedroom 1: 24'2 x 16'8 (7.37m x 5.08m)

Ensuite Shower Room

Walk-in Wardrobe

Bedroom 2: 14'5 x 13'2 (4.40m x 4.02m)

Ensuite Shower Room

Bedroom 3: 13'2 x 9'4 (4.02m x 2.85m)

Bedroom 4: 11'1 x 8'9 (3.38m x 2.67m)

Bedroom 5: 9'4 x 8'9 (2.85m x 2.67m)

Bathroom

### OUTSIDE

Front & Rear Gardens

Double Garage & Driveway

Storage



## Main features

- Spacious home on the outskirts of the village
- Impressive principle bedroom suite plus further ensuite and family bathroom
- Gravel driveway and detached double garage with storage
- Park-like mature grounds offering a secluded feel
- Downstairs study, utility room and lounge/dining room with inglenook fireplace



### Nearest Schools

Primary Schools: Bonners CofE School 0.7 miles, Buxted CofE Primary 0.7 miles, Manor Primary 0.8 miles.  
Secondary Schools: Uckfield Community Technology College 0.8 miles, Grove Park School 5.2 miles, Beacon Community College 5.6 miles



### Transport Information

Train Stations: Uckfield 1.2 miles, Buxted 1.3 miles, Crowborough 5.5 miles



### Address

Ringles Cross, Uckfield, East Sussex, TN22



### Directions

For directions to this property please contact us.





**cubitt&west**  
Helping you move forwards

Call Uckfield Branch 01825 768915 ■ [cubittandwest.co.uk](https://cubittandwest.co.uk)



- Legal advice should be taken to verify fixtures/fittings, planning, alterations and/or lease details
- Appliances & services are untested, dimensions are approximate and floor plans are not to scale
- Through a Homewise Home For Life Plan people aged 60+ can secure this property for up to 59% less, by purchasing a Lifetime Lease.



22824323/20250614/JL/RSE