

OVER 60?

Secure this property
for up to **59% less!**



Price
£900,000
Freehold

5x  2x  2x 

Eastbourne Road, Ridgewood, Uckfield,
East Sussex, TN22

cubitt&west
Helping you move forwards

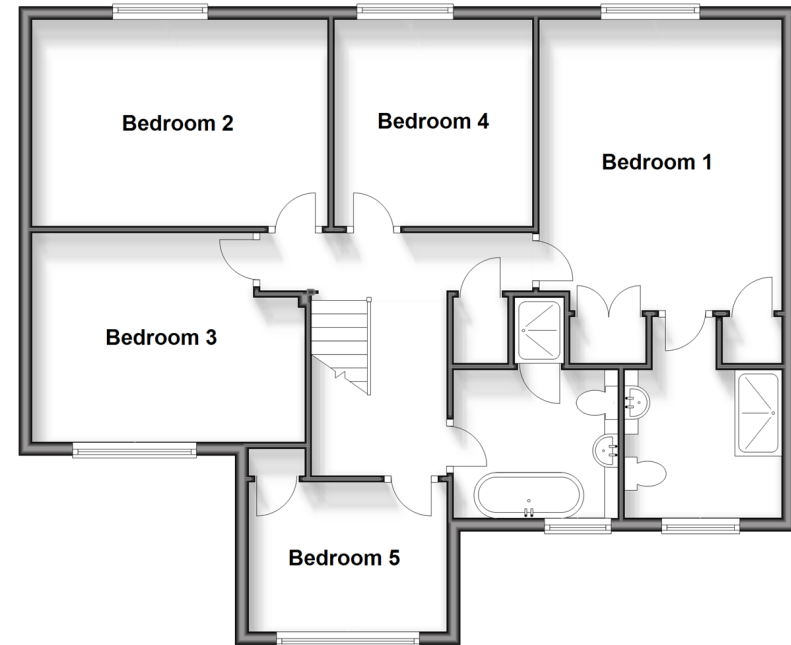
Ground Floor

Approx. 137.6 sq. metres (1480.8 sq. feet)



First Floor

Approx. 84.8 sq. metres (912.6 sq. feet)



Accommodation

GROUND FLOOR

Hallway
 Cloakroom
 Study: 7'9 x 7'3 (2.36m x 2.21m)
 Lounge: 20'2 x 13'5 (6.15m x 4.09m)
 Family Room: 14'6 x 10'10 (4.42m x 3.30m)
 Dining Area: 11'8 x 10'11 (3.56m x 3.33m)
 Kitchen : 12'10 x 11'10 (3.91m x 3.61m)
 Utility Room: 7'4 x 7'2 (2.24m x 2.19m)
 Conservatory: 13'10 x 13'5 maximum (4.22m x 4.09m)

FIRST FLOOR

Landing
 Bedroom 1: 13'10 x 11'10 (4.22m x 3.61m)
 Ensuite Shower Room
 Bedroom 2: 14'6 x 9'7 (4.42m x 2.92m)
 Bedroom 3: 9'11 x 9'7 (3.02m x 2.92m)
 Bedroom 4: 13'5 x 10'7 (4.09m x 3.23m)
 Bedroom 5: 9'11 x 7'4 (3.02m x 2.24m)
 Bathroom

OUTSIDE

Double Garage & Driveway
 Front & Rear Gardens



Main features

- Impressive, extended family home
- Open plan kitchen with Orangery style dining area
- Large gardens backing onto meadow & countryside views
- Annexe potential (subject to planning permission)
- Double garage and plenty of off-road parking space



Nearest Schools

Primary Schools: Harlands Primary 1.0 miles, Framfield C of E Primary 1.1 miles, Little Horsted C of E Primary 1.1 miles
Secondary Schools: Uckfield Community Technology College 1.8 miles, Ringmer Community College 4.3 miles



Transport Information

Train Stations: Uckfield 1.5 miles, Buxted 2.8 miles, Cooksbridge 6.4 miles



Address

Eastbourne Road, Ridgewood, Uckfield, East Sussex, TN22



Directions

For directions to this property please contact us.



cubitt&west
Helping you move forwards

Call Uckfield Branch 01825 768915 ■ cubittandwest.co.uk



■ Legal advice should be taken to verify fixtures/fittings, planning, alterations and/or lease details ■ Appliances & services are untested, dimensions are approximate and floor plans are not to scale
■ Through a Homewise Home For Life Plan people aged 60+ can secure this property for up to 59% less, by purchasing a Lifetime Lease.



22824081/20240210/JL/RSE