

OVER 60?

Secure this property
for up to **59% less!**



Guide Price

£750,000

Freehold

3x  2x  1x 

Straight Half Mile, Maresfield, East Sussex,

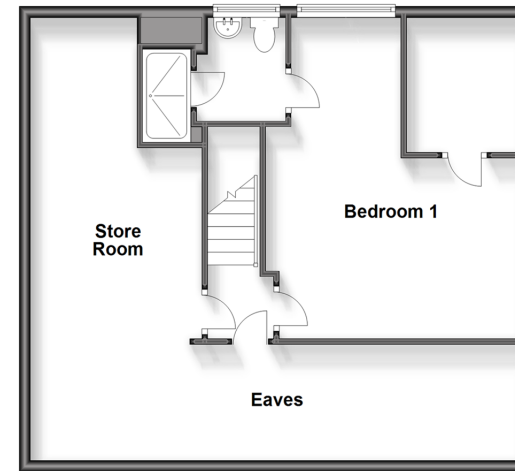
TN22

cubitt & west
Helping you move forwards

Ground Floor
Approx. 131.6 sq. metres (1417.0 sq. feet)



First Floor
Approx. 69.0 sq. metres (742.8 sq. feet)



Accommodation

GROUND FLOOR

Hallway
Kitchen/Dining Room: 31'3 x 18'4 (9.53m x 5.59m)
Utility Room: 14'3 x 7'9 (4.35m x 2.36m)
Lounge: 16'0 x 14'4 (4.88m x 4.37m)
Bedroom 2: 15'2 x 10'2 (4.63m x 3.10m)
Bedroom 3: 15'1 x 11'11 (4.60m x 3.63m)
Bathroom: 15'1 x 7'8 (4.60m x 2.34m)

FIRST FLOOR

Landing
Bedroom 1: 18'9 x 14'11 (5.72m x 4.55m)
Ensuite Shower Room
Dressing Room

OUTSIDE

Front & Rear Gardens
Log Cabin
Garage & Off-Road Parking



Main features

- Detached chalet style house with plot size of 0.6355 of an acre, close to countryside
- Set within a desirable village location, with privacy and space
- Recently decorated with improved kitchen and bathroom
- Stunning gardens with a fantastic log cabin ideal for a home studio/office
- Driveway for 3-4 cars and double garaging

Nearest Schools

Primary Schools: Bonners CofE School 0.8 miles, Buxted CofE Primary 1.6 miles, High Hurstwood C of E Primary 1.9 miles
Secondary Schools: Uckfield Community Technology College 2.2 miles, Grove Park School 4.5 miles

Transport Information

Train Stations: Buxted 2.3 miles, Uckfield 2.7 miles, Crowborough 5.1 miles

Address

Straight Half Mile, Maresfield, East Sussex, TN22

Directions

For directions to this property please contact us.



cubitt&west
Helping you move forwards

Call Uckfield Branch 01825 768915 ■ cubittandwest.co.uk



- If buying to let, the energy rating will need to be improved to at least 'E' rating before you can let the property
- Appliances & services are untested, dimensions are approximate and floor plans are not to scale

- Legal advice should be taken to verify fixtures/fittings, planning, alterations and/or lease details
- Through a Homewise Home For Life Plan people aged 60+ can secure this property for up to 59% less, by purchasing a Lifetime Lease.

EPC RATING

CURRENT: **F(26)** POTENTIAL: **D(68)**

22823738/20231101/JS/RSE