

**OVER 60?**

Secure this property  
for up to **59% less!**



**Price**

**£280,000**

**Freehold**

2x  1x  2x 

Mill Drove, Uckfield, TN22

**cubitt & west**  
Helping you move forwards



## Main features

- Spacious, flexible layout
- A bathroom on the ground and first floor
- Kitchen and dining area  
Conservatory leading off the kitchen
- Lovely private garden
- No onward chain

## Accommodation

### GROUND FLOOR

- Entrance Porch
- Hallway
- Lounge: 13'0 into bay x 11'0 (3.97m x 3.36m)
- Family Area: 12'5 into bay x 11'10 (3.79m x 3.61m)
- Dining Area: 10'11 x 10'11 (3.33m x 3.33m)
- Kitchen : 11'4 x 9'6 (3.46m x 2.90m)
- Conservatory: 11'2 x 10'0 (3.41m x 3.05m)
- Bathroom

### FIRST FLOOR

- Landing
- Bedroom 1: 12'2 x 9'11 (3.71m x 3.02m)
- En-Suite Bathroom
- Bedroom 2: 12'8 x 7'4 (3.86m x 2.24m)

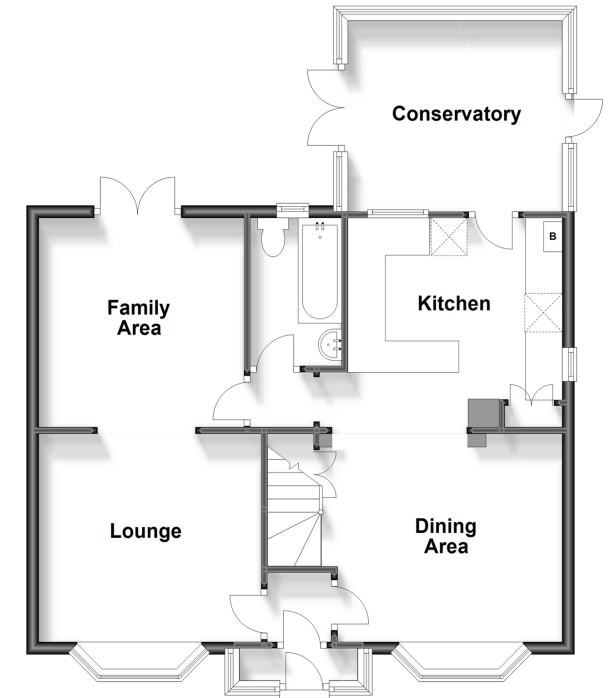
### OUTSIDE

- Front & Rear Garden
- Off road parking

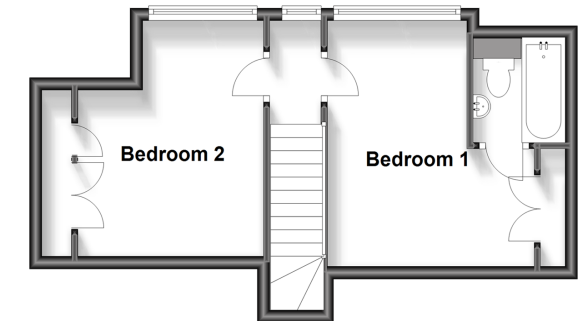
Call Uckfield - 01825 768915 ■ [cubittandwest.co.uk](http://cubittandwest.co.uk)

- Legal advice should be taken to verify fixtures/fittings, planning, alterations and/or lease details
- Appliances & services are untested, dimensions are approximate and floor plans are not to scale
- Through a Homewise Home For Life Plan people aged 60+ can secure this property for up to 59% less, by purchasing a Lifetime Lease.

Ground Floor  
Approx. 69.5 sq. metres (748.5 sq. feet)



First Floor  
Approx. 30.8 sq. metres (331.7 sq. feet)



22819623/20240907/JL/RSE