



OVER 60?

Secure this property
for up to **59% less!**

Price

£375,000

Leasehold

2x  1x  1x 

**Weymouth Court,
Grange Road, Sutton,
Surrey, SM2**

cubitt&west
Helping you move forwards



Main features

- Immaculately presented split level maisonette
- Modern finish throughout
- Excellent location close to all local amenities
- Balcony, communal gardens and garage
- Walking distance to station and High Street
- Lease in excess of 900 years

Accommodation

FIRST FLOOR

Entrance Hall
Lounge: 14'11 x 14'7 (4.55m x 4.45m)
Balcony
Kitchen: 8'6 x 7'5 (2.59m x 2.26m)

SECOND FLOOR

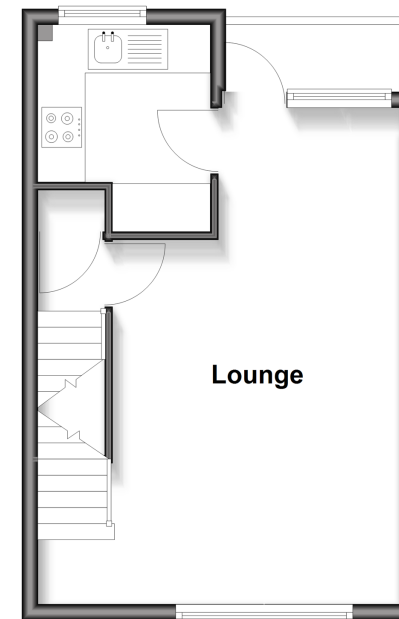
Landing
Bedroom 1: 11'5 x 11'5 (3.48m x 3.48m)
Bedroom 2: 9'8 x 8'2 (2.95m x 2.49m)
Bathroom

OUTSIDE

Garage En-Bloc
Communal Gardens

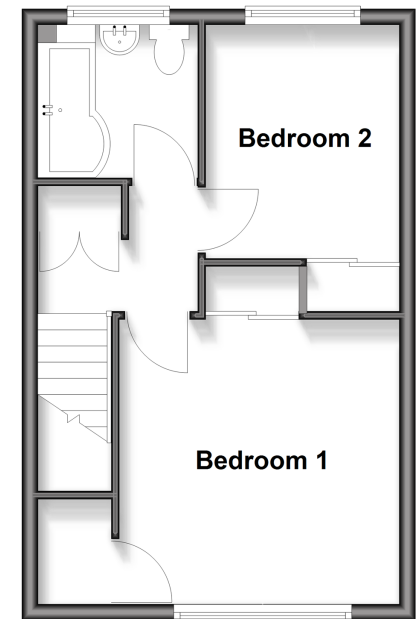
First Floor

Approx. 30.3 sq. metres (326.1 sq. feet)



Second Floor

Approx. 32.8 sq. metres (352.6 sq. feet)



Call Sutton - 020 8661 0330 ■ cubittandwest.co.uk

■ Legal advice should be taken to verify fixtures/fittings, planning, alterations and/or lease details
■ Through a Homewise Home For Life Plan people aged 60+ can secure this property for up to 59% less, by purchasing a Lifetime Lease.

■ Appliances & services are untested, dimensions are approximate and floor plans are not to scale