



Price
£725,000

Freehold

4x  3x  2x 

**Bushey Road, Sutton,
Surrey, SM1**

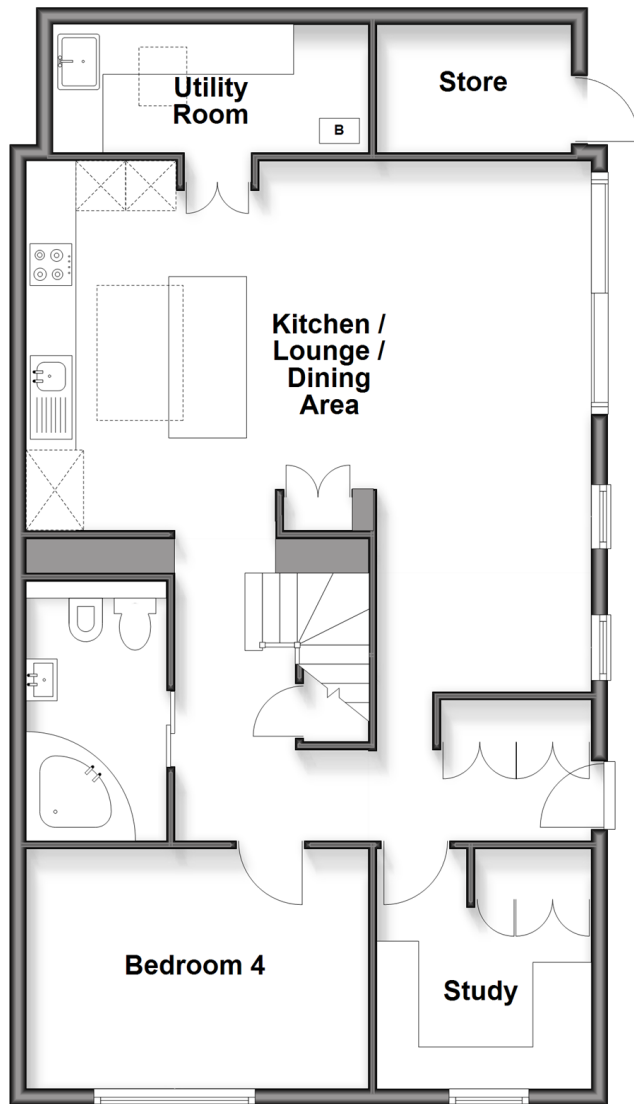
OVER 60?

Secure this property
for up to **59% less!**

cubitt&west
Helping you move forwards

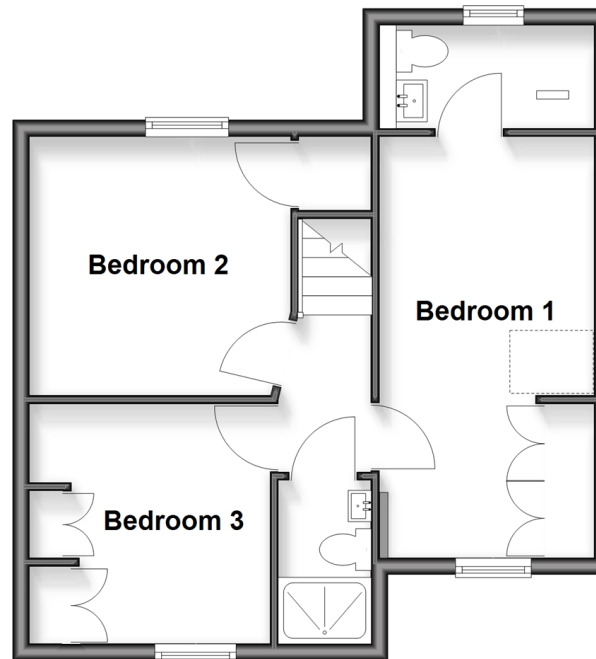
Ground Floor

Approx. 85.3 sq. metres (917.8 sq. feet)



First Floor

Approx. 41.7 sq. metres (449.3 sq. feet)



Accommodation

GROUND FLOOR

Entrance Hall

Lounge/Dining Area: 20'9 maximum x 10'8 maximum (6.33m x 3.25m)

Kitchen Area: 15'7 x 11'7 (4.75m x 3.53m)

Utility Room: 12'2 maximum x 5'11 minimum (3.71m x 1.80m)

Study: 9'3 x 8'4 (2.82m x 2.54m)

Bedroom 4: 12'7 x 9'3 (3.84m x 2.82m)

Bathroom: 9'3 x 5'2 (2.82m x 1.58m)

FIRST FLOOR

Landing

Bedroom 1: 16'5 x 8'4 (5.01m x 2.54m)

En-Suite Shower Room: 8'2 x 4'0 (2.49m x 1.22m)

Bedroom 2: 10'1 x 9'5 (3.08m x 2.87m)

Bedroom 3: 9'5 x 9'2 (2.87m x 2.80m)

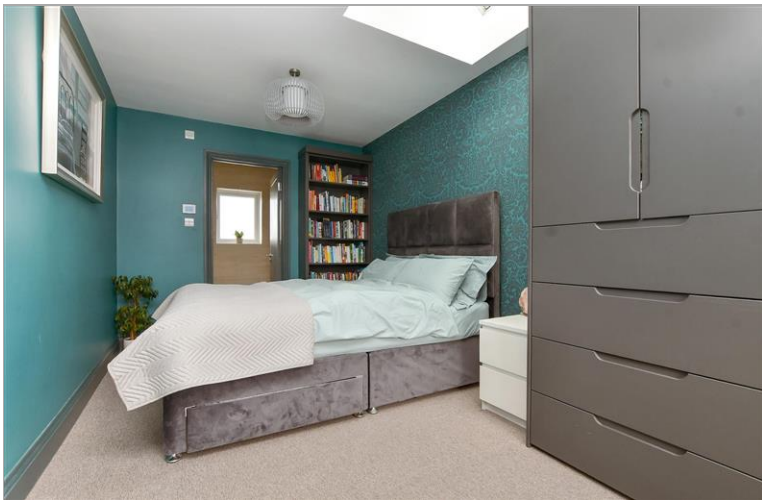
Shower Room: 6'4 x 3'2 (1.93m x 0.97m)

OUTSIDE

Driveway

Front Garden

Rear Garden



Main features

- Immaculately extended family home with a beautiful open plan layout
- Bi-fold doors opening onto a low maintenance and sunny garden
- Driveway with space for three cars
- Downstairs bedroom and bathroom suitable for multi generational living
- Utility room & pantry
- Superb transport links & popular schools close by



Nearest Schools

Primary Schools: All Saints Benhilton CofE Primary 0.4 miles, Westbourne Primary 0.6 miles, Robin Hood Junior School 0.7 miles
Secondary Schools: Sutton Boys Grammar Boys 0.7 miles, Greenshaw High 0.9 miles, Glenthorne High 1.0 miles



Transport Information

Train Stations: Sutton Common 0.5 miles, West Sutton 1.1 miles, Sutton 1.1 miles



Address

Bushey Road, Sutton, Surrey, SM1



Directions

For directions to this property please contact us.



cubitt&west
Helping you move forwards

Call Sutton Branch 020 8661 0330 ■ cubittandwest.co.uk



- Legal advice should be taken to verify fixtures/fittings, planning, alterations and/or lease details
- Appliances & services are untested, dimensions are approximate and floor plans are not to scale
- Through a Homewise Home For Life Plan people aged 60+ can secure this property for up to 59% less, by purchasing a Lifetime Lease.



22018067/20250512/DD/KWK