



Price
£750,000

Freehold

4x  2x  1x 

**Northfield Crescent,
Sutton, Surrey, SM3**

OVER 60?

Secure this property
for up to **59% less!**

cubitt&west
Helping you move forwards

Accommodation

GROUND FLOOR

Entrance Hall

Lounge: 14'4 x 12'3 (4.37m x 3.74m)

Kitchen Area: 15'3 x 11'9 (4.65m x 3.58m)

Dining/Family Area: 16'3 x 11'3 (4.96m x 3.43m)

Cloakroom

FIRST FLOOR

Landing

Bedroom 2: 14'6 x 9'7 (4.42m x 2.92m)

Bedroom 3: 12'6 x 11'6 (3.81m x 3.51m)

Bedroom 4: 7'8 x 6'6 (2.34m x 1.98m)

Shower Room

SECOND FLOOR

Landing

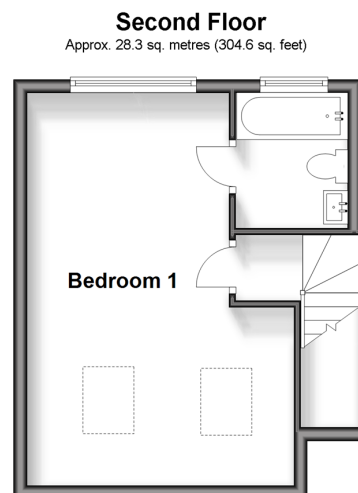
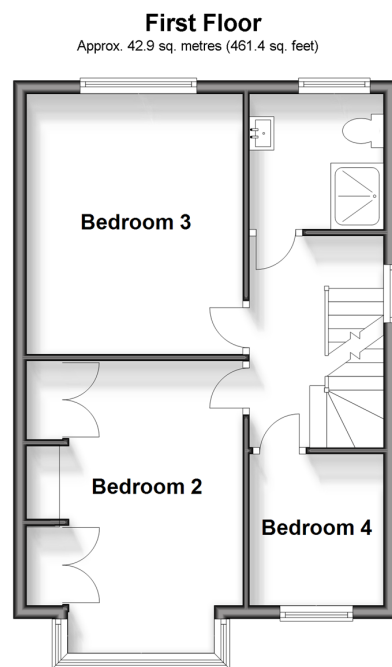
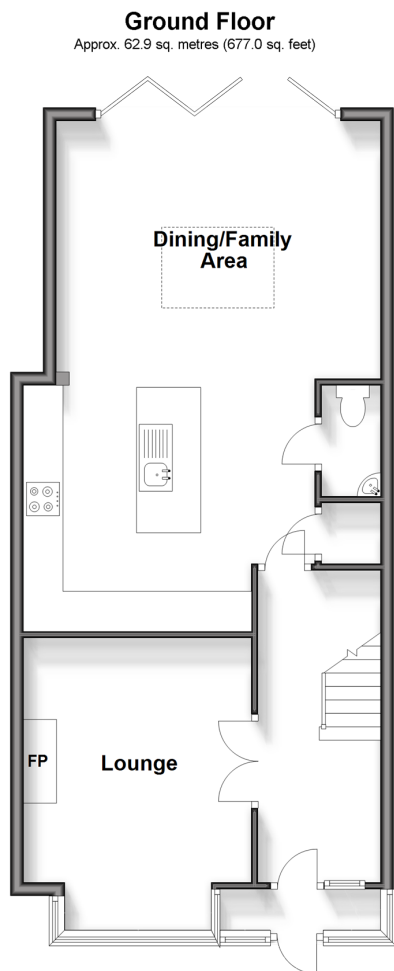
Bedroom 1: 15'0 x 10'3 (4.58m x 3.13m)

En-Suite Bathroom

OUTSIDE

Driveway

Rear Garden





Main features

- Recently renovated and extended to an excellent standard
- Close to a choice of sought after schools including Cheam High and Nonsuch
- Fabulous kitchen, dining, family room, ideal for entertaining
- Set over 3 floors with bathroom, shower room and cloakroom
- Three stations within walking distance



Nearest Schools

Primary Schools: Cheam Fields Primary 0.1 miles, Cheam Park Farm Junior School 0.3 miles, Westbourne Primary 0.6 miles
Secondary Schools: Cheam High 0.1 miles, Sutton High 0.9 miles, Nonsuch High School for Girls 0.9 miles



Transport Information

Train Stations: West Sutton 0.4 miles, Cheam 0.8 miles, Sutton Common 0.9 miles



Address

Northfield Crescent, Sutton, Surrey, SM3



Directions

For directions to this property please contact us.



cubitt&west
Helping you move forwards

Call Sutton Branch 020 8661 0330 ■ cubittandwest.co.uk



■ Legal advice should be taken to verify fixtures/fittings, planning, alterations and/or lease details ■ Appliances & services are untested, dimensions are approximate and floor plans are not to scale
■ Through a Homewise Home For Life Plan people aged 60+ can secure this property for up to 59% less, by purchasing a Lifetime Lease.



22017926/20250407/CR/JB