



Price
£325,000

Leasehold

2x  1x  1x 

**Redclyffe Court,
Worcester Road, Sutton,
Surrey, SM2**

OVER 60?

Secure this property
for up to **59% less!**

cubitt & west
Helping you move forwards



Main features

- Ground floor maisonette with direct access to communal gardens
- Immaculate condition throughout
- 961 Years remaining on the lease
- Walking distance to Cheam Village & Sutton High Street
- Free parking on the road outside

Accommodation

GROUND FLOOR

Entrance Hall

Lounge: 24'0 x 10'5 (7.32m x 3.18m)

Kitchen: 8'1 x 6'6 (2.47m x 1.98m)

Bedroom 1: 12'3 x 10'5 (3.74m x 3.18m)

Bedroom 2: 10'8 x 7'0 (3.25m x 2.14m)

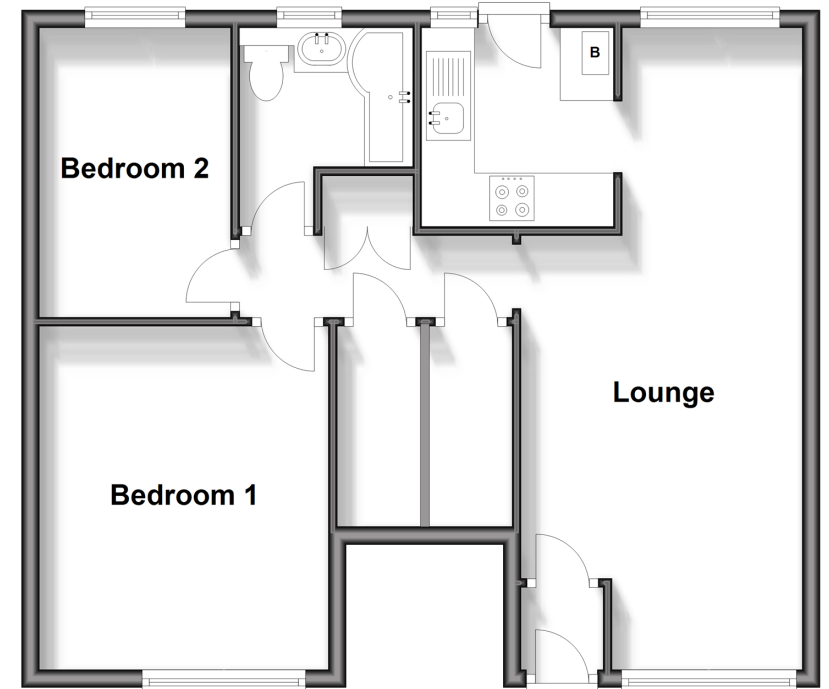
Bathroom: 7'4 x 6'3 (2.24m x 1.91m)

OUTSIDE

Communal Gardens

Ground Floor

Approx. 58.3 sq. metres (627.6 sq. feet)



Call Sutton - 020 8661 0330 ■ cubittandwest.co.uk

- Legal advice should be taken to verify fixtures/fittings, planning, alterations and/or lease details
- Appliances & services are untested, dimensions are approximate and floor plans are not to scale
- Through a Homewise Home For Life Plan people aged 60+ can secure this property for up to 59% less, by purchasing a Lifetime Lease.



22017770/20241026/KWK/KWK