



OVER 60?

Secure this property
for up to **59% less!**

Price

£300,000

Leasehold

1x  1x  1x 

**Leben Court, Sutton
Court Road, Sutton,
Surrey, SM1**

cubitt&west
Helping you move forwards



Main features

- Minutes from Sutton mainline station
- Spacious open plan living with plenty of storage
- Benefits from a large balcony, ideal for the summer months
- Secure allocated underground parking and lift service
- Close to the High Street and amenities

Accommodation

FIRST FLOOR

Entrance Hall

Living Room/Kitchen : 33'4 x 14'8
(10.17m x 4.47m)

Balcony

Bedroom: 21'9 x 9'4 (6.63m x 2.85m)

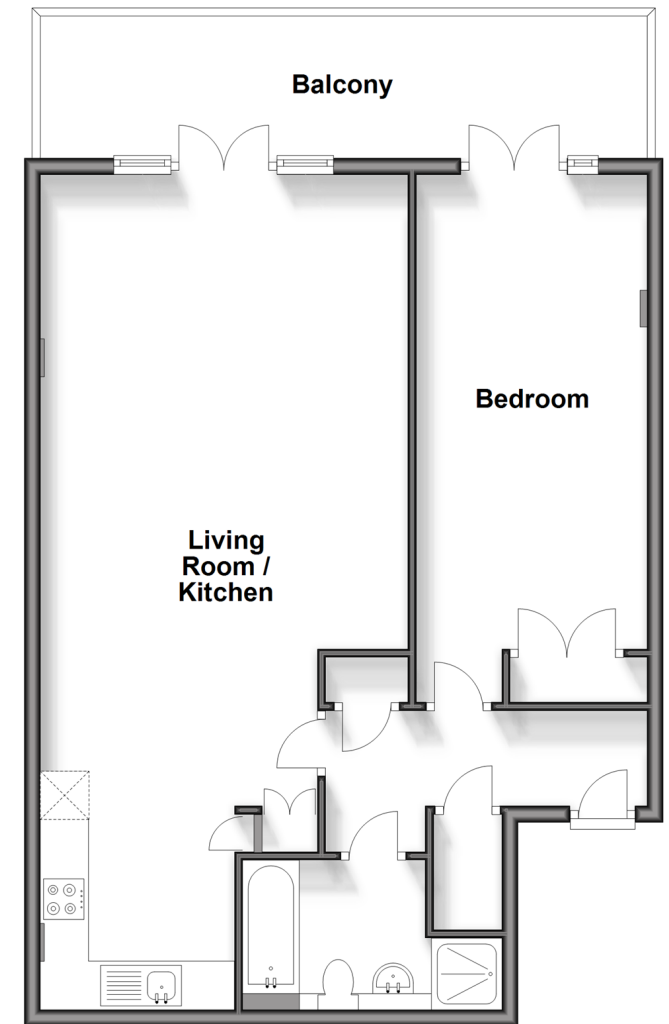
Bathroom: 9'8 x 6'5 (2.95m x 1.96m)

OUTSIDE

Underground Allocated Parking

First Floor

Approx. 73.7 sq. metres (793.8 sq. feet)



Call Sutton - 020 8661 0330 ■ cubittandwest.co.uk

- Legal advice should be taken to verify fixtures/fittings, planning, alterations and/or lease details
- Appliances & services are untested, dimensions are approximate and floor plans are not to scale
- Through a Homewise Home For Life Plan people aged 60+ can secure this property for up to 59% less, by purchasing a Lifetime Lease.



22015892/20250308/CR/JB