



Price

£275,000

Leasehold

2x  1x  1x 

Autumn Drive, Sutton,  
Surrey, SM2

**OVER 60?**

Secure this property  
for up to **59% less!**

**cubitt & west**  
Helping you move forwards



## Main features

- Well located for both Sutton and Belmont stations
- Finished to a great standard throughout
- Situated in a quiet cul-de-sac
- Belmont village just a short walk away
- Outstanding schools on your doorstep

## Accommodation

### GROUND FLOOR

Entrance Hall

Lounge/Dining Room: 17'5 x 10'10  
(5.31m x 3.30m)

Kitchen: 7'2 x 7'0 (2.19m x 2.14m)

Bedroom 1: 13'2 x 8'4 (4.02m x 2.54m)

Bedroom 2: 9'9 x 5'7 (2.97m x 1.70m)

Bathroom: 6'6 x 5'5 (1.98m x 1.65m)

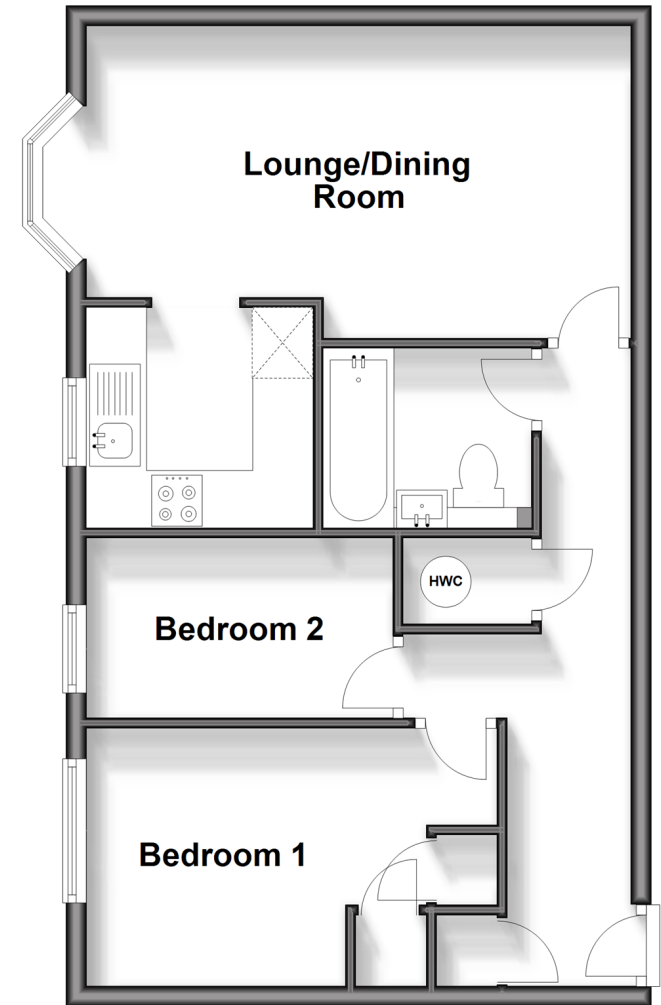
### OUTSIDE

Communal Gardens

Off Road Parking

## Ground Floor

Approx. 50.9 sq. metres (547.5 sq. feet)



**Call Sutton - 020 8661 0330 ■ cubittandwest.co.uk**

- A private rental licensing scheme applies to some properties in this area, please contact us before proceeding
- Legal advice should be taken to verify fixtures/fittings, planning, alterations and/or lease details
- Appliances & services are untested, dimensions are approximate and floor plans are not to scale
- Through a Homewise Home For Life Plan people aged 60+ can secure this property for up to 59% less, by purchasing a Lifetime Lease.



22017560/20240729/CR/JH