



**Price**  
**£500,000**

**Freehold**

2x  1x  1x 

**Erskine Road, Sutton,  
Surrey, SM1**

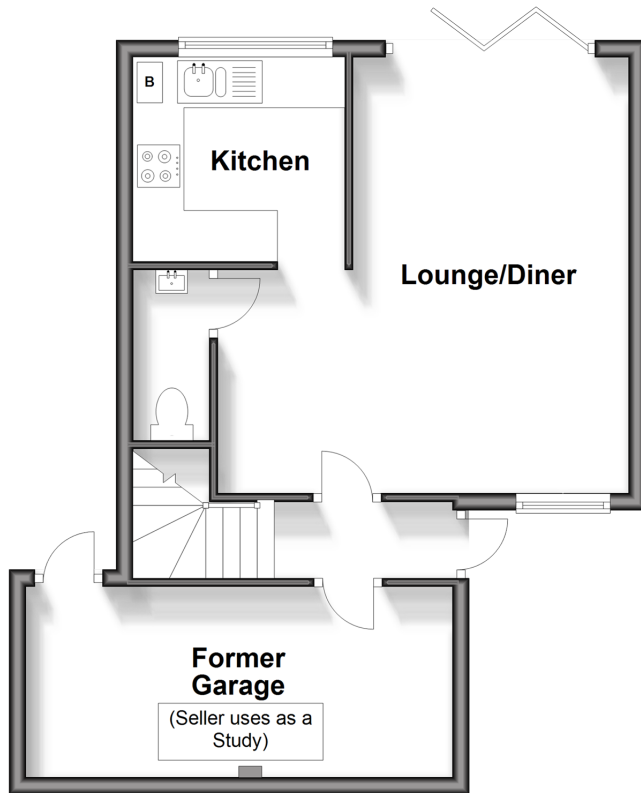
**OVER 60?**

Secure this property  
for up to **59% less!**

**cubitt & west**  
Helping you move forwards

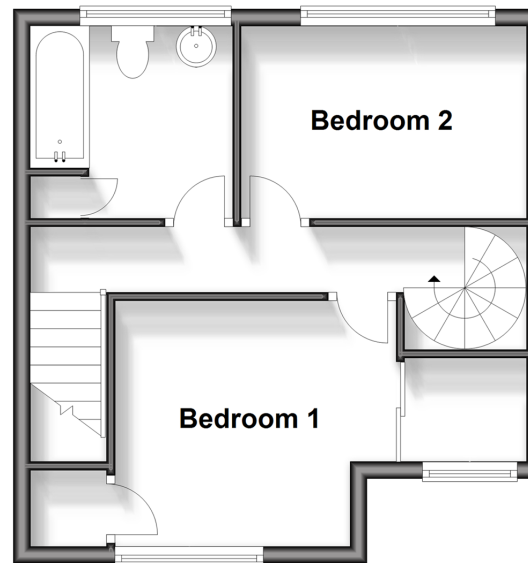
## Split Level Ground Floor

Approx. 45.6 sq. metres (490.9 sq. feet)



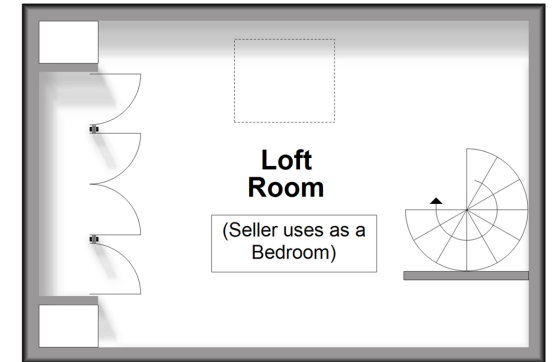
## First Floor

Approx. 33.9 sq. metres (364.9 sq. feet)



## Second Floor

Approx. 22.2 sq. metres (239.5 sq. feet)



## Accommodation

### SPLIT-LEVEL GROUND FLOOR

Entrance Hall

Lounge/Diner: 17'3 x 15'6 (5.26m x 4.73m)

Kitchen: 8'5 x 7'9 (2.57m x 2.36m)

Cloakroom

Study (Former Garage)

### FIRST FLOOR

Landing

Bedroom 2: 15'7 x 9'6 (4.75m x 2.90m)

Bedroom 3: 16'2 x 10'9 (4.93m x 3.28m)

Family Bathroom: 8'1 x 7'5 (2.47m x 2.26m)

### SECOND FLOOR

Loft Room: 17'0 x 12'4 (5.19m x 3.76m)

### OUTSIDE

Rear Garden

Garage (current use - study)



## Main features

- Additional loft room utilised as a bedroom
- Superbly sociable garden space accessed via high end bi-fold doors
- Garage for parking, currently being used as a study
- Fantastic condition throughout
- Walking distance to Sutton town centre & Carshalton Village whilst being close to local amenities

## Nearest Schools

Primary Schools: Rushy Meadow Primary 0.4 miles, Manor Park Primary 0.4 miles, All Saints Benhilton CofE Primary 0.5 miles  
Secondary Schools: Sutton Grammar School for Boys 0.4 miles, Greenshaw 0.4 miles, Carshalton Girls 0.5 miles

## Transport Information

Train Stations: Carshalton 0.6 miles, Sutton Common 0.7 miles, Sutton 0.8 miles

## Address

Erskine Road, Sutton, Surrey, SM1

## Directions

For directions to this property please contact us.



**cubitt&west**  
Helping you move forwards

Call Sutton Branch 020 8661 0330 ■ [cubittandwest.co.uk](http://cubittandwest.co.uk)



- A private rental licensing scheme applies to some properties in this area, please contact us before proceeding
- Appliances & services are untested, dimensions are approximate and floor plans are not to scale

- Legal advice should be taken to verify fixtures/fittings, planning, alterations and/or lease details
- Through a Homewise Home For Life Plan people aged 60+ can secure this property for up to 59% less, by purchasing a Lifetime Lease.



22012751/20240422/KWK/KWK