



Price

£300,000

Leasehold

2x  2x  1x 

Gateway Court, Oakhill
Road, Sutton, Surrey,
SM1

OVER 60?

Secure this property
for up to **59% less!**

cubitt & west
Helping you move forwards



Main features

- Gated allocated parking for the ultimate convenience
- Walking distance to the town centre and Sutton Green
- Beautiful condition throughout
- Fantastic Primary and Secondary schools on your doorstep
- Less than half a mile to Sutton Common Station for Thameslink line

Accommodation

SECOND FLOOR

Entrance Hall

Kitchen/Living Room: 22'9 x 9'9 (6.94m x 2.97m)

Bedroom 1: 12'4 x 8'8 (3.76m x 2.64m)

Ensuite Shower Room

Bedroom 2: 12'4 x 8'8 (3.76m x 2.64m)

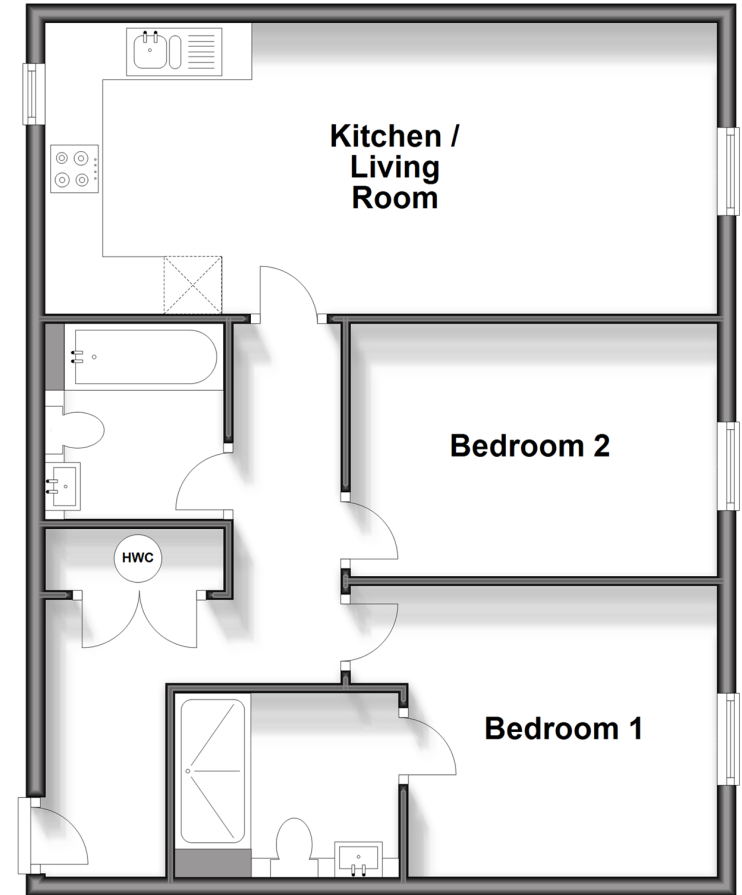
Bathroom

OUTSIDE

Allocated Parking

Communal Garden

Second Floor
Approx. 63.1 sq. metres (679.2 sq. feet)



Call Sutton - 020 8661 0330 ■ cubittandwest.co.uk

- A private rental licensing scheme applies to some properties in this area, please contact us before proceeding
- Legal advice should be taken to verify fixtures/fittings, planning, alterations and/or lease details
- Appliances & services are untested, dimensions are approximate and floor plans are not to scale
- Through a Homewise Home For Life Plan people aged 60+ can secure this property for up to 59% less, by purchasing a Lifetime Lease.



22011946/20240617/CR/JH